



Microsoft Dynamics GP 2015
Installation Instructions
December 1, 2014

Copyright	Copyright © 2014 Microsoft. All rights reserved.
Limitation of liability	<p>This document is provided "as-is." Information and views expressed in this document, including URL and other Internet Web site references, may change without notice. You bear the risk of using it.</p> <p>Some examples depicted herein are provided for illustration only and are fictitious. No real association or connection is intended or should be inferred.</p>
Intellectual property	<p>This document does not provide you with any legal rights to any intellectual property in any Microsoft product.</p> <p>You may copy and use this document for your internal, reference purposes.</p>
Trademarks	<p>Microsoft, Excel, Dexterity, Internet Explorer, Lync, Microsoft Dynamics, Outlook, SharePoint, SQL Server, Visual Studio, Windows, Windows Server, and Windows Vista are trademarks of the Microsoft group of companies. FairCom and c-tree Plus are trademarks of FairCom Corporation and are registered in the United States and other countries.</p> <p>All other trademarks are property of their respective owners.</p>
Warranty disclaimer	Microsoft Corporation disclaims any warranty regarding the sample code contained in this documentation, including the warranties of merchantability and fitness for a particular purpose.
License agreement	Use of this product is covered by a license agreement provided with the software product. If you have any questions, please call the Microsoft Dynamics GP Customer Assistance Department at 800-456-0025 (in the U.S. or Canada) or +1-701-281-6500.

Publication date December 2014

Contents

Introduction	2
What's in this manual.....	2
Symbols and conventions.....	3
Resources available from the Help menu.....	3
Send us your documentation comments.....	4
Part 1: Preparation	6
Chapter 1: Installation checklist	7
Microsoft Dynamics GP checklist.....	7
Reviewing the Readme file.....	8
Troubleshooting resources.....	8
Before you call support.....	9
Chapter 2: System requirements	11
Prerequisites.....	11
Home page prerequisites	11
Word templates prerequisites.....	11
Email requirements.....	12
SQL Server Reporting Services requirements.....	13
Modify the Report Server web.config file	13
Microsoft Dynamics GP CRM requirements	14
Supported system requirements.....	14
About remote access.....	14
Chapter 3: Network configuration.....	15
Domain	15
Network protocol tuning.....	15
TCP/IP	15
Chapter 4: Microsoft SQL Server configuration.....	17
SAN and NAS disk support.....	17
Selecting a SQL Server collation.....	17
Understanding sorting options.....	18
Installing Microsoft SQL Server 2012.....	18
Installing Microsoft SQL Server 2012 Express Edition.....	21
Setting up an ODBC data source using the SQL Native Client driver	23
SQL Server Agent	24
Enabling Delete PJournal job	24
Chapter 5: Account framework.....	25
Understanding the account framework.....	25
Using a custom or default account framework.....	26
Planning your account framework.....	26
Choosing account framework storage size	27

Part 2: Microsoft Dynamics GP installation.....	30
Chapter 6: Install Microsoft Dynamics GP on the first computer	31
Installation overview.....	31
Installing Microsoft Dynamics GP (first computer).....	31
Chapter 7: Using Microsoft Dynamics GP Utilities	35
Microsoft Dynamics GP Utilities overview.....	35
Installation options in Microsoft Dynamics GP Utilities	36
Preparing Microsoft Dynamics GP for use with default settings	36
Preparing Microsoft Dynamics GP for use with custom settings.....	42
Additional installation tasks	50
Adding sample company data.....	50
Creating a company.....	53
Removing SOP and Invoicing message.....	55
Managing the Web Client SQL Server login	55
Managing user authentication	56
Chapter 8: Installing additional components.....	57
Microsoft Dynamics GP features.....	57
Adding or removing additional features.....	58
Additional components	60
Installing an additional component	61
Chapter 9: Creating a company.....	63
Chart of accounts overview.....	63
Adding a company using Microsoft Dynamics GP Utilities	63
Chapter 10: After installing Microsoft Dynamics GP.....	69
Logging in to and quitting Microsoft Dynamics GP	69
Registering Microsoft Dynamics GP	70
Security for Microsoft Dynamics GP.....	70
Tasks for SQL Server Reporting Services reports.....	71
Part 3: Microsoft Dynamics GP client installation.....	74
Chapter 11: Creating an installation package.....	75
Installation package overview	75
Creating an installation package	76
Chapter 12: Microsoft Dynamics GP on subsequent computers.....	79
Installation overview.....	79
Installing Microsoft Dynamics GP on an additional computer	79
Synchronizing a client's account framework.....	82
Multiple instances of Microsoft Dynamics GP	83
Index.....	85

Introduction

Use this manual to install and prepare Microsoft Dynamics GP for use. Review the introductory information about the resources available to you, then use the [Microsoft Dynamics GP checklist](#) on page 7 as your guide to installing Microsoft Dynamics GP.

Check for current instructions

This information was current as of December 1, 2014. The documentation may be updated as new information becomes available. Check the Documentation Resources for Microsoft Dynamics GP 2013 Web site <http://go.microsoft.com/fwlink/?LinkId=249465> for the most current documentation.

This introduction is divided into the following sections:

- [What's in this manual](#)
- [Symbols and conventions](#)
- [Resources available from the Help menu](#)
- [Send us your documentation comments](#)



What's in this manual

This manual provides guidelines for installing and setting up your Microsoft Dynamics GP system. It lists the latest system requirements, contains a step-by-step guide through the installation process, gives tips on troubleshooting, and describes initial setup procedures. The manual is divided into the following parts:

- [Part 1. Preparation](#), contains information about preparing your computers, network, and database to use with Microsoft Dynamics GP.
- [Part 2. Microsoft Dynamics GP installation](#), describes how to install Microsoft Dynamics GP on your server, set up an account framework, create your first company, and install additional components.
- [Part 3. Microsoft Dynamics GP client installation](#), describes how to install Microsoft Dynamics GP on your client machines, synchronize your account framework, and install additional components.

Symbols and conventions

This documentation uses the following symbols and conventions to make specific types of information stand out.

Symbol	Description
	The light bulb symbol indicates helpful tips, shortcuts and suggestions.
	The warning symbol indicates situations you should be especially aware of when completing tasks.

Convention	Description
<i>Creating a batch</i>	Italicized type indicates the name of a section or procedure.
File >> Print or File > Print	The (>>) or (>) symbol indicates a sequence of actions, such as selecting items from a menu or toolbar, or pressing buttons in a window. This example directs you to go to the File menu and choose Print.
TAB OR ENTER	Small capital letters indicate a key or a key sequence.

Resources available from the Help menu

After you've installed Microsoft Dynamics GP, the Help menu gives you access to user assistance resources on your computer, as well as on the Web.

Contents

Opens the Help file for the active Microsoft Dynamics GP component, and displays the main "contents" topic. To browse a more detailed table of contents, click the Contents tab above the Help navigation pane. Items in the contents topic and tab are arranged by module. If the contents for the active component includes an "Additional Help files" topic, click the links to view separate Help files that describe additional components.

To find information in Help by using the index or full-text search, click the appropriate tab above the navigation pane, and type the keyword to find.

To save the link to a topic in the Help, select a topic and then select the Favorites tab. Click Add.

Index

Opens the Help file for the active Microsoft Dynamics GP component, with the Index tab active. To find information about a window that's not currently displayed, type the name of the window, and click Display.

About this window

Displays overview information about the current window. To view related topics and descriptions of the fields, buttons, and menus for the window, choose the appropriate link in the topic. You also can press F1 to display Help about the current window.

Lookup

Opens a lookup window, if a window that you are viewing has a lookup window. For example, if the Checkbook Maintenance window is open, you can choose this item to open the Checkbooks lookup window.

Show Required Fields

Highlights fields that are required to have entries. Required fields must contain information before you can save the record and close the window. You can change the font color and style used to highlight required fields. In the navigation pane for the Microsoft Dynamics GP home page, choose User Preferences and then choose Display.

Printable Manuals

Displays a list of manuals in Adobe Acrobat .pdf format, which you can print or view.

What's New

Provides information about enhancements that were added to Microsoft Dynamics GP since the last major release.

Documentation and resources on the web

Opens a Web page that provides links to a variety of Web-based user assistance resources. Access to some items requires registration for a paid support plan.

Customer Feedback Options

Provides information about how you can join the Customer Experience Improvement Program to improve the quality, reliability, and performance of Microsoft® software and services.

Send us your documentation comments

We welcome comments regarding the usefulness of the Microsoft Dynamics GP documentation. If you have specific suggestions or find any errors in this manual, send your comments by email to the following address: bizdoc@microsoft.com.

To send comments about specific topics from within Help, click the Documentation Feedback link, which is located at the bottom of each Help topic.

Note: By offering any suggestions to Microsoft, you give Microsoft full permission to use them freely.

Part 1: Preparation

This part contains information about preparing your computers, network, and database to use with Microsoft Dynamics GP. This part contains the following chapters:

- [Chapter 1. “Installation checklist.”](#) provides an overview of information you’ll need during the installation process.
- [Chapter 2. “System requirements.”](#) lists prerequisites for Microsoft Dynamics GP and disk space requirements for Microsoft SQL Server.
- [Chapter 3. “Network configuration.”](#) lists the settings required for each type of network software supported by Microsoft Dynamics GP.
- [Chapter 4. “Microsoft SQL Server configuration.”](#) lists the settings you need to make at a database level to ensure that all users of Microsoft Dynamics GP can access information appropriately.
- [Chapter 5. “Account framework.”](#) contains information about planning and setting up your account framework.

Chapter 1: Installation checklist

This chapter provides an overview of information you'll need during the installation process. It contains tips on gathering information and a checklist to guide you through installing Microsoft Dynamics GP. Next to each step is a reference to where you can find more detailed information.

This chapter contains the following sections:

- [Microsoft Dynamics GP checklist](#)
- [Reviewing the Readme file](#)
- [Troubleshooting resources](#)
- [Before you call support](#)

Microsoft Dynamics GP checklist

Use this checklist as your guide to installing and setting up Microsoft Dynamics GP.

Step	For more information
1. Plan the security of your system.	\\Media\GreatPlains\Documentation\Manuals\SecurityPlanning.pdf Planning for Security
2. Refer to the Documentation and resources web site for new or updated information relating to the installation. You also can use CustomerSource for additional information.	http://go.microsoft.com/fwlink/?LinkId=249465 For the most current documentation https://mbs.microsoft.com/customersource Support Hot Topics or Knowledge Base
3. View the Readme file and make a note of the items that pertain to you.	\\Media\GreatPlains\Documentation\GPReadme.chm
4. Obtain your need registration keys for Microsoft Dynamics GP 2015.	Contact your Microsoft Dynamics GP partner before going to CustomerSource/My Account for registration keys for Microsoft Dynamics GP 2015. https://mbs.microsoft.com/customersource My Account
5. Verify system requirements.	http://community.dynamics.com/gp/b/erpsoftwareblog/archive/2014/10/27/microsoft-dynamics-gp-2015-system-requirements.aspx
6. Install a networking protocol.	TCP/IP on page 15
7. Install and set up Microsoft SQL Server.	Installing Microsoft SQL Server 2012 on page 18 Note: Be sure to install Microsoft SharePoint [®] if you want to use SharePoint Integrated Mode when deploying SQL Server Reporting Services reports.
8. Configure SQL Server Reporting Services.	This step is required if you didn't configure SQL Server Reporting Services 2012 in Native mode when installing SQL Server and you want to deploy SQL Server Reporting Services reports for Microsoft Dynamics GP. If you installed SQL Server Reporting Services 2012 in SharePoint Integrated mode, use the SharePoint Central Administration to complete the configuration.
9. Design the account framework.	Chapter 5, "Account framework"
10. Install Microsoft Dynamics GP Tenant Services.	This step is required if you want to host Microsoft Dynamics GP for multiple, unrelated organizations. Tenant Services Installation and Administration Guide
11. Install the data server and initial client.	Installing Microsoft Dynamics GP (first computer) on page 31
12. Be sure to download and install the latest Microsoft Dynamics GP 2015 update.	https://mbs.microsoft.com/customersource/northamerica/gp/downloads
13. Set up the account framework and Microsoft Dynamics GP system data tables.	Preparing Microsoft Dynamics GP for use with custom settings on page 42
14. Create your first company.	Adding a company using Microsoft Dynamics GP Utilities on page 63
15. Install additional components.	Installing an additional component on page 61
16. Set up your company.	System Setup instructions (Help >> Contents >> select Setting up the system)

Step	For more information
17. Install Microsoft Dynamics GP applications on clients.	Creating an installation package on page 76 Installing Microsoft Dynamics GP on an additional computer on page 79 Synchronizing a client's account framework on page 82 Installing an additional component on page 61
18. Identify the sources of any errors.	Knowledge Base on CustomerSource

Reviewing the Readme file

To view additional information that was not available when this manual was written, use the Readme file on the Microsoft Dynamics GP media. Be sure to review the Readme file (GPReadme.chm) before installing Microsoft Dynamics GP. You can view the Readme by double-clicking the file in \Media\GreatPlains\Documentation\GPReadme.chm.

Troubleshooting resources

To obtain access to information when you encounter a problem, you can use the following troubleshooting resources.

Documentation and resources on the web

Opens a Web page that provides links to a variety of Web-based user assistance resources. Access to some items requires registration for a paid support plan.

Microsoft Dynamics GP documentation

If you've installed Microsoft Dynamics GP, you can use help to access context-sensitive assistance about windows. You can choose Help >> About This Window or press F1 to access help for the window you're currently viewing. Use the Search tab to find more information about alert messages and procedures.

You can choose Help >> Printable Manuals to find a printable version of procedural or overview information for specific modules.

To view and download documentation, visit the Documentation Resources for Microsoft Dynamics GP 2015 Web site (<http://go.microsoft.com/fwlink/?LinkId=249465>.)

CustomerSource

CustomerSource is a Web site for registered Microsoft Dynamics GP customers. CustomerSource is available 24 hours a day. You must have a user name and password to enter the site. You can access CustomerSource by navigating to <https://mbs.microsoft.com/customersource> with your Internet browser.

From the CustomerSource start page, select the Support option. From the Support page, you can look for information on your own or you can use e-mail to send a question to the Microsoft Dynamics GP Technical Support team.

You'll find links to Support Hot Topics and Knowledge Base—the best source of information for error messages, troubleshooting guides, work-arounds, and answers to common Report Writer questions. You'll also find links for automated fixes, hardware compatibility, and downloads. Use the New Support Request link to contact Microsoft Dynamics GP Technical Support electronically. You also can view recent support requests for yourself and your company.

Microsoft SQL Server troubleshooting resources

SQL Server Books Online is a documentation resource installed with Microsoft SQL Server. Use Books Online to troubleshoot SQL error messages and other issues related to SQL. Microsoft's web site, www.microsoft.com, is also a good source of information for issues related to SQL or your operating system. You also can download Microsoft SQL Server Management Studio and SQL Server Books Online for Microsoft SQL Server Express Edition.



SQL-related error messages appear as DBMS errors in Microsoft Dynamics GP. Always use the SQL Server Books Online to troubleshoot DBMS errors. Choose the Search tab and enter the error number, then choose List Topics.

Before you call support

If you are experiencing a problem when installing Microsoft Dynamics GP, have the answers ready to the following questions to help your support specialist narrow down the source of the problem you've experiencing.

- What is the exact error message?
- When did the error first occur?
- What task were you attempting to perform at the time the error message was displayed?
- Has the task been completed successfully in the past?
- What is the name of the window you are you working in?
- What have you done so far to attempt to fix the problem?
- If you are using more than one company, does the problem occur in another company?
- Does the problem occur on another workstation?
- What versions of software are you using?

Verify the version numbers for Microsoft Dynamics GP, your Microsoft SQL Server, and Microsoft Windows. Also note updates applied to each product.

- Are you using an integrating product with Microsoft Dynamics GP?
- Does the problem occur for the sa or system administrator user?
- Does the problem occur at the database server?
- If you use Windows Server 2008 Terminal Server, or Remote Desktop Services, does the same issue happen at the Terminal Server?

Chapter 2: System requirements

This chapter contains a list of the prerequisites for Microsoft Dynamics GP, as well as the disk space requirements for SQL Server.

This chapter contains the following sections:

- [Prerequisites](#)
- [Home page prerequisites](#)
- [Word templates prerequisites](#)
- [Email requirements](#)
- [SQL Server Reporting Services requirements](#)
- [Modify the Report Server web.config file](#)
- [Microsoft Dynamics GP CRM requirements](#)
- [Supported system requirements](#)
- [About remote access](#)

Prerequisites

The following components also must be installed before you can install Microsoft Dynamics GP.

- Microsoft Windows Installer 4.5
- Microsoft .NET Framework 3.5
- Microsoft .NET Framework 4.5
- Visual C++ 2013 Runtime Libraries (x64)
- Visual C++ 2013 Runtime Libraries (x86)
- Visual Basic for Applications Core
- Microsoft SQL Server Native Client 10.0
- Dexterity Shared Components 12.0
- Microsoft Application Error Reporting 11.0
- Open XML SDK 2.0 for Microsoft Office
- Microsoft Lync 2010 SDK Runtime

If one of these components isn't installed on your computer when you attempt to install Microsoft Dynamics GP using the installation media, the Microsoft Dynamics GP Bootstrapper Setup window opens. This window shows which components need to be installed. Click Install to install the missing component or components. After all the components are installed, the installation of Microsoft Dynamics GP continues.

Home page prerequisites

To display metrics and reports in the Business Analyzer area on your home page, install and set up Microsoft SQL Server 2012 Reporting Services, SQL Server 2014 Reporting Services, or SQL Server 2012 Reporting Services to use with Microsoft Dynamics GP. For more information about installing and setting up Reporting Services for use with Microsoft Dynamics GP, go to the Microsoft Dynamics GP 2015 documentation resource Web site (<http://go.microsoft.com/fwlink/?LinkId=249465>) for the most current documentation.

Word templates prerequisites

Predefined Word templates for document types such as sales quotes and purchase orders are provided for you with Microsoft Dynamics GP. The templates are based

on standard reports in Microsoft Dynamics GP. You also can create your own template or create a template from an existing template.

The following components are required to modify templates.

- Microsoft Word 2010 or later to make layout changes such as changing the font size
- Microsoft Dynamics GP Add-in for Microsoft Word to add fields and data sources to the template
- Visual Studio Tools for Office Runtime 2.0 or later—Visual Studio Tools for Office Runtime 3.0 is installed with Microsoft Dynamics GP Add-in for Microsoft Word

You can install Microsoft Dynamics GP Add-in for Microsoft Word from the Microsoft Dynamics GP installation media. Double-click the Setup.exe file and then click Microsoft Dynamics GP Add-in for Microsoft Word.

Be sure that the Open XML SDK 2.0 for Microsoft Office (installed as a Microsoft Dynamics GP prerequisite) is installed before you use Word Templates for Microsoft Dynamics GP.

Email requirements

By using the email functionality in Microsoft Dynamics GP, you can embed documents into the body of the email or send documents as attachments. You can send a single document, batches of documents, or send multiple documents from sales and purchasing transaction lists. When setting up the email functionality, you can select which documents you can send and which customers and vendors should receive their documents in email. If you are using Word templates for Microsoft Dynamics GP, you can send predefined or customized forms.

Review the following requirements.

- You can send documents by email if you're using a MAPI-compliant e-mail service or Exchange 2007 Service Pack 1 or greater with Exchange Web Services.
- If you are using Exchange 2007 Service Pack 1 or greater with Exchange Web Services, the Autodiscover service must be enabled to connect to the Exchange server.
- The email functionality in Microsoft Dynamics GP supports the following document types. Depending on the document type and the email service, Microsoft Word 2010 or later and Word templates for Microsoft Dynamics GP are required.

File format	Word 2010	Word templates	Web Client
XPS	Required for MAPI	Enabled	Not available
PDF	Required for MAPI	Enabled	Not available
DOCX	Not required	Enabled	Available*
HTML	Not required	Not required	Available*

*Email for Microsoft Dynamics GP Web Client will only be available if Exchange is your server type in the System Preferences window.

- Before you can send documents as DOCX, PDF, or XPS attachments, the Word template for the document must be enabled in the Template Configuration Manager window.
- The email functionality is supported on the 32-bit edition of Microsoft Office 2010.
- The email functionality is supported on the 64-bit edition of Microsoft Office 2010 if you are using Exchange 2007 Service Pack 1 or greater with Exchange Web Services and Exchange is your server type in the System Preferences window.

Depending on the file format you choose to send your documents in email, your customers and vendors must be using the following components to view their documents.

File format	Component
XPS	Microsoft XPS Viewer
PDF	Adobe Reader
DOCX	Microsoft Word Viewer
HTML*	Internet Explorer 8 or later
*If you are using Microsoft Dynamics GP Web Client only, your customers and vendors must be using HTML to view their documents	

SQL Server Reporting Services requirements

Before you deploy Microsoft Dynamics GP Reporting Services reports, you must install and configure SQL Server Reporting Services, and then set up security for SQL Server Reporting Services reports. Review the following table for the version of SQL Server Reporting Services and the report type available for that version.

SQL Server Reporting Services version	Report type available
Reporting Services 2008 Reporting Services 2008 R2 Reporting Services 2012	SQL Server Reporting Services reports Charts and key performance indicators (KPIs)
Reporting Services 2008 R2 Reporting Services 2012	Map charts

Modify the Report Server web.config file

To deploy the SQL Server Reporting Services reports, you must modify the Report Server web.config file for the timeout execution and the maximum request length. If you don't update the Report Server web.config file for the timeout execution, you might receive an error that states that the operation has timed out. If you don't update the Report Server web.config file for the maximum request length, you will receive an error that the deployment has exceeded the maximum request length allowed by the target server.



You must be an administrator to modify the Report Server web.config file.

To modify the Report Server Web.config file:

1. Create a backup copy of the web.config file located in the ReportServer folder. (The ReportServer folder is located in C:\Program Files\Microsoft SQL Server\MSSQLSERVER\Reporting Services\ReportServer where Reporting Services is installed.)
2. Open the Report Server web.config file using a text editor, such as Notepad.
3. Search for <httpRuntime executionTimeout="9000" />.
4. In that line, change executionTimeout="9000" to executionTimeout="19000" and add the value maxRequestLength="20960".

```
<httpRuntime executionTimeout="19000" maxRequestLength="20960"/>
```

5. Save and close the Report Server web.config file.

Microsoft Dynamics GP CRM requirements

You must be using SQL Server 2008 R2 Reporting Services or SQL Server 2012 Reporting Services and Microsoft Dynamics CRM 2011 or later to deploy SQL Server Reporting Services reports and metrics that includes CRM data. Microsoft Dynamics CRM supports only the native mode of deployment of SQL Server Reporting Services.

You must install the Microsoft Dynamics CRM Reporting Extensions on the Microsoft Dynamics GP report server to render reports. Before you render a SQL Server Reporting Services report with CRM data, be sure to start the Microsoft Dynamics CRM application to initialize data.

Supported system requirements

For current system requirements for Microsoft Dynamics GP, see <http://go.microsoft.com/fwlink/?LinkId=521785>. The system requirements include supported databases and operating systems, hardware recommendations, client requirements, and Terminal Server requirements.



Recommended system requirements depend on the number of users and transactions. If there will be many users performing concurrent tasks, such as depreciation, posting, or heavy reporting, enhancing your hardware and system software improves performance.

About remote access

You can use Windows Server 2008 Terminal Services, Windows Server 2008 R2 Remote Desktop Services, and Windows Server 2012 Remote Desktop Services. Citrix Xenapps can also be used with most database configurations to provide remote access to Microsoft Dynamics GP in a Wide Area Network (WAN) environment.

For more information about system requirements see <http://go.microsoft.com/fwlink/?LinkId=521785>. You also should refer to the documentation provided by Citrix for more information.

Chapter 3: Network configuration

This chapter contains information about network configuration that must be in place before installing Microsoft Dynamics GP, and includes the following sections:

- [Domain](#)
- [Network protocol tuning](#)
- [TCP/IP](#)

Domain

To use Microsoft Dynamics GP, your Web server, back office server, Terminal Services server or Remote Desktop Services (if applicable), and client workstations must belong to a domain.

A domain is a group of computers that are part of a network and share a common directory database. A domain is administered as a unit with common rules and procedures. Each domain has a unique name.

Network protocol tuning

To optimize your network for Microsoft SQL Server and Microsoft Dynamics GP, refer to the following guidelines.

- Limit the network to one protocol. (TCP/IP is required.)
- Remove unused network protocols.
- Use 1 GB Ethernet for optimal performance. For more information about system requirements, see <http://go.microsoft.com/fwlink/?LinkId=263763>.
- Use switches rather than hubs, if optimal performance is required.

TCP/IP

Transport Control Protocol/Internet Protocol (TCP/IP) is required for Microsoft Dynamics GP.

If you're using TCP/IP, review the information in this section to be sure that the network is set up properly. Then use your networking protocol documentation to install and test the protocol on all clients and servers before you install Microsoft Dynamics GP.

IP addresses

Each computer that you use with Microsoft Dynamics GP must have a unique IP number (Internet Protocol address) associated with it. For more information about IP addresses, consult your network administrator or refer to your networking protocol software documentation.

TCP/IP name resolution

You should use some type of name resolution in your network, so that each computer is identified by a unique host name. Name resolution is a method of identifying each computer and can be accomplished by having a specific server act as a domain name server or putting a hosts file on each client and server.

For more information about name resolution using either a domain name server or hosts files, consult your network administrator or refer to your networking protocol software documentation.

Testing TCP/IP connectivity

To test connectivity between clients and servers, use an application distributed with most TCP/IP packages called ping. The ping application will attempt to send a network message or set of messages to a designated computer and inform you whether the message arrived at that computer. Be sure you ping the host name and the ID address of every computer in your system before installing Microsoft Dynamics GP.

Chapter 4: Microsoft SQL Server configuration

This chapter guides you through the Microsoft SQL Server 2012 and the Microsoft SQL Server 2012 Express installation and setup process for Microsoft Dynamics GP. It's important that you install and set up Microsoft SQL Server according to these instructions.

If you've already installed and set up SQL Server using different options, you may have to change those options. Changing options after they've been set sometimes involves reinstalling SQL Server.

This chapter contains the following sections:

- [*SAN and NAS disk support*](#)
- [*Selecting a SQL Server collation*](#)
- [*Understanding sorting options*](#)
- [*Installing Microsoft SQL Server 2012*](#)
- [*Installing Microsoft SQL Server 2012 Express Edition*](#)
- [*Setting up an ODBC data source using the SQL Native Client driver*](#)
- [*SQL Server Agent*](#)
- [*Enabling Delete PJournal job*](#)

SAN and NAS disk support

Because Microsoft Dynamics GP relies on SQL Server to maintain databases and make databases available, there are guidelines you must follow when configuring SQL Server disk support.

We recommend that you use a Storage Area Network (SAN) or locally attached disk to store your Microsoft SQL Server database files because this configuration optimizes SQL Server performance. By default, use of network database files stored on a networked server or Network Attached Storage (NAS) is not enabled for SQL Server. However, you can configure SQL Server to store a database on a networked server or NAS storage server. Servers used for this purpose must meet SQL Server requirements for data write ordering and write-through guarantees.

If you are using Microsoft SQL Server Express Edition, SAN and NAS disk support isn't typically used.

For more information, see Microsoft Knowledge Base article, "Description of support for network database files in SQL Server," (go to support.microsoft.com and search for the article) or contact the SQL Server Support Team.

Selecting a SQL Server collation

A SQL Server collation—a set of rules that determines how character data is sorted and compared—includes character set, sort order, and locale-specific settings. See your SQL Server 2012 documentation for more information about collation settings.

The SQL Server collation you select determines how information is presented in response to SQL queries and affects the performance of the system.

The code page for character data is defined by the Windows locale selected when the operating system was installed. The code page contains the valid set of characters in your SQL Server database. A character set consists of 256 uppercase and lowercase letters, numbers, and symbols. The first 128 characters are the same for all character sets. The supported character set in the United States is the 1252/ISO character set.

It is important to select the correct collation for Microsoft Dynamics GP when you're installing SQL Server. Using SQL Server collations that include Binary (sort order 50) or Dictionary Order, Case-Insensitive (sort order 52) sorting is required for Microsoft Dynamics GP. To change these settings at a later time, you must reinstall SQL Server and Microsoft Dynamics GP.



You should check the compatibility of all the products you have that will use SQL Server before deciding on the collation option.

Understanding sorting options

Using SQL Server collations that include Binary (sort order 50) or Dictionary Order, Case-Insensitive (sort order 52) sorting is required.

Binary sort order assigns characters numeric values of 0 through 255. Dictionary Order, Case-Insensitive (DOCI) sort order makes no distinction between uppercase and lowercase characters. DOCI is the most common sort order.

The following table shows the differences between Dictionary Order, Case-Insensitive and Binary.

Sort order	Technical name	Sorting result
Dictionary Order, Case-Insensitive	SQL_Latin1_General_CP1_CI_AS	McMaster MMCompanyName Zebra
Binary	Latin1_General	MMCompanyName McMaster Zebra

Installing Microsoft SQL Server 2012

We recommend that you follow the instructions in this section if you have not yet installed Microsoft SQL Server 2012. For information about upgrading SQL Server, see the SQL Server installation documentation. (In the window that appears when you insert the SQL Server DVD, select Browse Setup/Upgrade Help.)



With SQL Server 2012, you can have multiple instances of SQL Server on the same physical server. We recommend that you have a dedicated server. See your SQL Server 2012 documentation for more information about multiple instances.

To install Microsoft SQL Server 2012:

1. Insert the SQL Server 2012 installation media. The main SQL Server installation screen should appear. If you do not see this screen, browse the media and double-click the Setup.exe file.
2. After the SQL Server Installation Center appears, click Installation in the left pane. Then, click New SQL Server stand-alone installation or add features to an existing installation.

3. Your computer is scanned for conditions that may stop installation. To proceed with the installation, click OK in the Setup Support Rules window.
4. In the Product Key window, enter the product key. Click Next.
5. Mark the option to accept the terms of the license terms and then click Next.
6. SQL Server setup files are installed on your computer. To proceed with the installation, click Next in the Setup Support Rules window.
7. In the Setup Role window, select SQL Server Feature Installation, and click Next.
8. In the Feature Selection window, select the features you want to use and specify the location to install SQL Server 2012. You should install at least the following features to use Microsoft Dynamics GP.
 - Database Engine Services
 - Client Tools Connectivity
 - Client Tools Backwards Compatibility
 - Documentation Components
 - Management Tools - Basic



Select **Reporting Services – Native** or **Reporting Services – SharePoint** to use SQL Server Reporting Services reports, display SQL Server Reporting Services metrics on your home page in Microsoft Dynamics GP, and display SQL Server Reporting Services reports in Microsoft Dynamics Business Analyzer. If you have marked Reporting Services – SharePoint, be sure to mark **Reporting Services Add-in for SharePoint Products** as well. For more information about installing and setting up SQL Server Reporting Services for use with Microsoft Dynamics GP see the Documentation and resources fro Microsoft Dynamics GP 2015 Web site (<http://go.microsoft.com/fwlink/?LinkId=249465>) for the most current documentation.

Click Next.

9. Your computer is scanned again for conditions that may stop installation. To proceed with the installation, click Next in the Installation Rules window.
10. In the Instance Configuration window, select a default or named instance for your installation.
 - To install a new default instance (the primary instance on the computer), select Default instance and click Next. There can be only one default instance.
 - To install a named instance, select Named instance and then enter a unique instance name. Click Next.
 - If a default or named instance is already installed, select the existing instance for your installation and click Next. The instance upgrades and you will have the option to install additional components.

For information about using instances of SQL Server, see your SQL Server documentation. We recommend that you have a dedicated server.

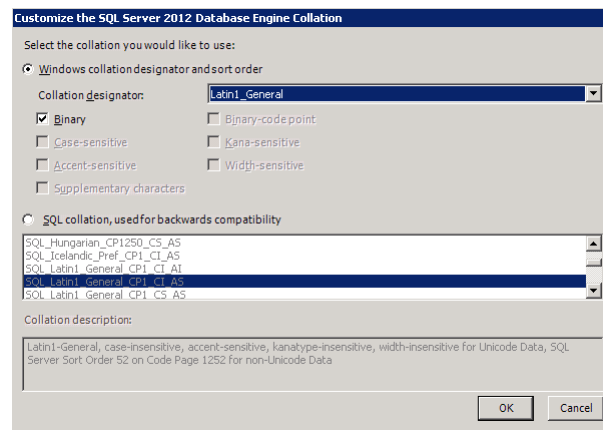
11. The required disk space is calculated. Click Next.

12. In the Services Accounts tab, we recommend that you use the same account for each service and automatically start services.
13. In the Collation tab, click the Customize button for the Database Engine.
14. In the Customize the SQL Server 2012 Database Engine Collation window, you can select Binary or Dictionary Order, Case-Insensitive as the sorting option. See [Selecting a SQL Server collation](#) on page 17 for more information about collation options.

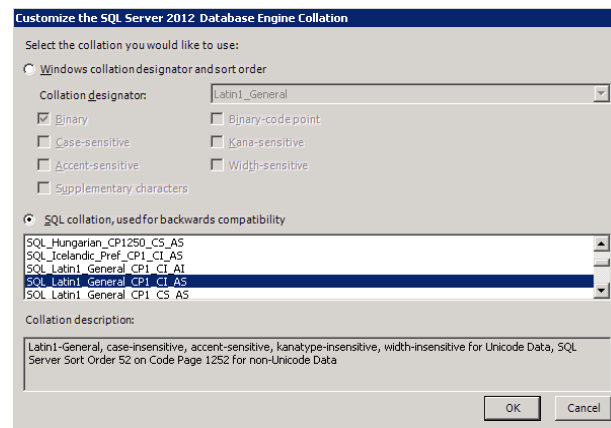


You should check the compatibility of all the products, such as Business Portal for Microsoft Dynamics GP and Workflow, you have that will use SQL Server before deciding on the collation option.

Binary To use Binary sorting, use the Windows Collation designator and sort order option and make the following selections in the window.



Dictionary Order, Case-Insensitive To use Dictionary Order, Case-Insensitive sorting, choose SQL collation, used for backwards compatibility option and make the following selections in the window.



Click OK after you make your selections, and then click Next.

15. In the Database Engine Configuration window, select Mixed Mode as the authentication mode in the Server Configuration tab. Mixed Mode is required by Microsoft Dynamics GP.

With Mixed Mode, users can connect using Windows Authentication or SQL Server Authentication. You must enter and confirm the system administrator password when you select Mixed Mode. You'll use this as the password to log in to Microsoft Dynamics GP Utilities as the system administrator.

You must specify at least one system administrator. To add the account, click Add Current User to add accounts to the list of system administrators.

Click Next.

16. If you selected to install Reporting Services, use the Reporting Services Configuration page to specify the type of Reporting Services installation to create. Click Next.
17. In the Error Reporting window, select to allow error reporting. Click Next.
18. Your computer is scanned again for conditions that may stop installation. To proceed with the installation, click Next in the Installation Configuration Rules window.
19. In the Ready to Install window, review the list of components that will be installed and click Install.
20. The Installation Progress window appears, allowing you to view the status of the installation. Click Next after the installation is completed.
21. In the Complete window, click Close to exit the installation wizard.
22. Restart the computer if you are instructed to do so.
23. Install the current SQL Server 2012 service pack. See the Microsoft Download Center (<http://www.microsoft.com/downloads/en/default.aspx>) for the latest service pack information.

Installing Microsoft SQL Server 2012 Express Edition

Microsoft SQL Server 2012 Express Edition has a maximum database size of 10 GB. You can download Microsoft SQL Server 2012 Express from www.microsoft.com. Be sure to download SQL Server 2012 Express with data management tools. You can download SQL Server 2012 Books Online for SQL Server Express from www.microsoft.com.

Use the information in this section to install Microsoft SQL Server 2012 Express on your computer.

To install Microsoft SQL Server 2012 Express Edition:

1. Download SQL Server 2012 Express with data management tools.
2. A dialog window appears, showing the progress of the files being extracted.
3. After the files have been extracted, the SQL Server Installation Center appears.

4. Click New installation or add features to an existing installation.
5. Mark the option to accept the terms of the License Agreement and then click Next.
6. The Setup Support Rules window appears while your computer is scanned again for conditions that may stop installation.
7. In the Feature Selection window, select the features you want to use and specify the location to install SQL Server 2012 Express. Click Next.
8. In the Instance Configuration window, select a default or named instance for your installation.
 - To install a new default instance (the primary instance on the computer), select Default instance and click Next. There can be only one default instance.
 - To install a named instance, select Named instance and then enter a unique instance name. Click Next.
 - If a default or named instance is already installed, select the existing instance for your installation and click Next. The instance upgrades and you will have the option to install additional components.

For information about using instances of SQL Server, see your SQL Server documentation. We recommend that you have a dedicated server.

9. In the Services Accounts tab, we recommend that you use the same account for each service and automatically start services. Click Use the same account for all SQL Service services to open a window where you can enter a user name and password. Click OK to return to the Server Configuration window.
10. In the Account Provisioning tab, select Mixed Mode as the authentication mode. Mixed Mode is required by Microsoft Dynamics GP.

With Mixed Mode, users can connect using Windows Authentication or SQL Server Authentication. You must enter and confirm the system administrator password when you select Mixed Mode. You'll use this is the password to log in to Microsoft Dynamics GP Utilities as the system administrator.

You must specify at least one system administrator. To add the account, click Add Current User to add accounts to the list of system administrators.

Click Next.

11. In the Error Reporting window, select to allow error reporting. Click Next.
12. The Installation Progress page appears, allowing you to view the status of the installation.
13. In the Complete window, click Close to exit the installation wizard.
14. Restart the computer if you are instructed to do so.

15. Install the current SQL Server 2012 Express service pack. See the Microsoft Download Center (<http://www.microsoft.com/downloads/en/default.aspx>) for the latest service pack information.

Setting up an ODBC data source using the SQL Native Client driver

You must set up a 32-bit Open Database Connectivity (ODBC) data source using SQL Native Client or SQL Native Client 10 on your computer. If you are using SQL Server 2012, you must set up a 32-bit Open Database Connectivity (ODBC) data source using SQL Native Client or SQL Native Client 11 on your computer. Use these instructions to enter the appropriate setup information for ODBC for SQL Server.

If you are using a 64-bit operating system, you must set up a 32-bit ODBC data source. For instructions on how to set up a data source for a 64-bit operating system, see Microsoft Knowledge Base article, "How to set up an ODBC Data Source on SQL Server for Microsoft Dynamics GP," (<https://mbs.microsoft.com/knowledgebase/KBDisplay.aspx?scid=kb:en-us:870416>).

To set up an ODBC data source using the SQL Native Client driver:

1. Open the ODBC Data Source Administrator window.
2. Select the System DSN tab and choose Add.
3. In the Create New Data Source window, select SQL Native Client, SQL Native Client 10.0, or SQL Native Client 11.0 from the list and choose Finish.

The options in the list depend on the version of SQL Server you are using.

4. In the first Create a New Data Source to SQL Server window, enter the following information.

Field	Value
Name	Enter the name to use for the data source. This name will be stored in the Odbc.ini file.
Description	Enter a description of the data source.
Server	Enter the name you assigned to the SQL Server when you installed Microsoft SQL Server.

Choose Next.

5. In the second Create a New Data Source to SQL Server window, select With SQL Server authentication using a login ID and password entered by the user option as how to verify the login ID.
6. Enter sa as the login ID and enter a password. Choose Next.
7. In the third Create a New Data Source to SQL Server window, be sure that all the options are unmarked and choose Next.
8. In the fourth Create a New Data Source to SQL Server window, be sure that all the options are unmarked. Choose Finish.

9. In the ODBC Microsoft SQL Server Setup window, verify your settings and choose OK. You can also choose the Test Data Source button to test it before choosing OK.

SQL Server Agent

When you install Microsoft Dynamics GP on the server, an automated database maintenance job is created. SQL Server Agent is used to run automated jobs.

Be sure that the SQL Server Agent service is set up to start automatically with the operating system if you are using Microsoft SQL Server. In SQL Server Service Manager, select SQL Server Agent from the list of services and mark the Auto-start service when OS starts option.

Jobs are customizable, and you can select how frequently they should be completed. You may want certain jobs to run every half hour, while others should run once at night. For more information on scheduling jobs, refer to Microsoft SQL Server Books Online.

SQL Server Agent is not available for SQL Server Express. For information about how to schedule backups for SQL Server Express, see Microsoft Knowledge Base article, "How to schedule and automate backups of SQL Server databases in SQL Server Express" (<http://support.microsoft.com/kb/2019698/en-us>).

Microsoft SQL Server 2008 Express doesn't include SQL Server Agent. Refer to Support Hot Topic on CustomerSource <https://mbs.microsoft.com/customersource> for more information about scheduling a backup.

Enabling Delete PJournal job

The Delete PJournal job is created during the installation of Microsoft Dynamics GP. By enabling the Delete PJournal job, the speed of the posting process is increased.

To enable Delete PJournal job using SQL Server Management Studio:

1. Open SQL Server Management Studio by choosing Start >> Programs >> Microsoft SQL Server >> SQL Server Management Studio.
2. Log in to Microsoft SQL Server.
3. Expand SQL Server Agent, and click Jobs.

If you are using SQL Server 2012, expand Jobs.

4. Right-click on Remove Posted PJourals for your company database and click Properties to open the Properties window.
5. Unmark and mark the Enable option.
6. Click Apply and then click OK.

Chapter 5: Account framework

Use the information in this chapter to plan your account framework for your company. A framework is a set of maximum values, such as maximum segment lengths that each of your company's account formats must fit within. The account framework is very difficult to change later after it's set up.



Note that the account framework you enter in the Microsoft Dynamics GP Utilities will be used for the account format in all companies you're planning to set up.

This chapter contains the following sections:

- [Understanding the account framework](#)
- [Using a custom or default account framework](#)
- [Planning your account framework](#)
- [Choosing account framework storage size](#)

Understanding the account framework

The framework you'll enter includes maximums for the account length, the number of account segments, and the length of each segment. These maximums will be used for the account format in all companies you're planning to set up. You'll enter the specific account format for each company when you access Microsoft Dynamics GP and set up the company.

Maximums you enter for account framework during installation will apply to additional companies you set up later. For example, you could enter the account framework maximums shown in the following table during the installation process.

Account framework example	
Maximum account length	20
Maximum number of segments	3
Length of segment 1	7
Length of segment 2	10
Length of segment 3	3

With these maximums for the account framework defined during installation, you wouldn't be able to set up the following account format for a company.

Invalid account format for the corresponding framework	
Account length	20
Number of segments	3
Length of segment 1	8
Length of segment 2	9
Length of segment 3	3

Although the maximum account length and number of segments is within the limit, this account format is invalid because the length of the first segment—8—exceeds the segment maximum that was defined during installation.

Using a custom or default account framework

You can design your account framework or use a default account framework. The account framework applies to all companies in your Microsoft Dynamics GP system, and represents the maximum length of your accounts, number of segments, and segment lengths. The account framework is very difficult to change later after you set it up using Microsoft Dynamics GP Utilities.

To use the default account framework, you'll select Basic as the installation option in Microsoft Dynamics GP Utilities after you install Microsoft Dynamics GP. The Basic option also provides default settings for your system database and system password. For more information, see [Installation options in Microsoft Dynamics GP Utilities](#) on page 36.

The following is the account framework for a basic installation.

Maximum number of segments	5
Length of each segment	9
Account preview	XXXXXXXX-XXXXXXXX-XXXXXXXX-XXXXXXXX-XXXXXXXX
Sorting Options	No sorting options by segment

If you decide that the basic installation's default account framework fits your business needs, you don't need to plan your account framework before you install Microsoft Dynamics GP and use Microsoft Dynamics GP Utilities.

If you decide not to use the default framework, review [Planning your account framework](#) on page 26 and [Choosing account framework storage size](#) on page 27 to plan your account framework before you install Microsoft Dynamics GP. After you design your account framework and install Microsoft Dynamics GP, you'll select Advanced as the installation option in Microsoft Dynamics GP Utilities. Use Microsoft Dynamics GP Utilities to enter a framework for the account formats that will be used by all companies you'll set up in Microsoft Dynamics GP.

Planning your account framework

When planning an account framework, think about the account format you've used with your previous accounting system and consider future expansions and the account format for additional companies you may add to your system later. Plan the maximum number of segments you'll use in any company, and the maximum length of each segment.



It's important to consider what your current and future needs are for the framework; after you've entered the framework, it's unlikely that you'll be able to change it. If you find that you need to change your account framework, contact your reseller or Microsoft Dynamics GP Technical Support.

To use one of the default charts of accounts provided with Microsoft Dynamics GP, set up the account framework with maximums that are at least the size listed below. To preview the default charts of accounts for various business and industry types, review the Default Charts of Accounts for Microsoft Dynamics GP article (<http://go.microsoft.com/fwlink/?LinkId=89042>).

Minimum account framework for use with sample company	
Maximum account length	at least 9 characters
Maximum number of segments	at least 3 segments
Length of segment 1	at least 3 characters
Length of segment 2	at least 4 characters
Length of segment 3	at least 2 characters

If you have more than one company, you may need to enter maximum segment lengths that exceed the 66-character account length maximum when the segment lengths are added together. Assume that you have two companies using the account formats shown in the following table.

Account format	Company 1	Company 2
Account length	66	66
Number of segments	3	3
Length of segment 1	10	20
Length of segment 2	40	30
Length of segment 3	15	15

In this case, you'd enter the following account framework maximums.

Account framework accommodating both account formats	
Maximum account length	66
Maximum number of segments	3
Length of segment 1	20
Length of segment 2	40
Length of segment 3	15

Notice that the total of the three segment lengths—75—exceeds the maximum account length—66. However, the account format for each company is within the account framework maximum.

Choosing account framework storage size

You will need to consider the storage size that is required by each segment. The storage size is made up of segment units—a unit of measure that determines the size of each segment. In Microsoft Dynamics GP, the storage size is calculated automatically when you enter each segment, though it isn't displayed. A message will be displayed if your framework exceeds the allowable storage size.

Each segment uses one or two segment units for storage, depending upon whether it's an odd or an even-numbered segment. These units will be added to the total length of all segments. When the maximum account length is set, the total of all segments units must be 82 or less. For example, assume that an account has two 5-character segments and seven 8-character segments, the total storage size will be 82 (one unit is added to each of the five character segments because 5 is an odd

number and two units must be added to each of the 8-character segments because 8 is an even number). This example would be calculated as shown in the following table.

Segment	Segment length	Segment units	Total size
1	5	1	6
2	5	1	6
3	8	2	10
4	8	2	10
5	8	2	10
6	8	2	10
7	8	2	10
8	8	2	10
9	8	2	10
Total	66	16	82

Based on the previous example, if you use an account framework with two 5-character segments and eight 8-character segments, it would not be valid because the total would be 92, or ten greater than the maximum allowed, as shown in the following table.

Segment	Segment length	Segment units	Total size
1	5	1	6
2	5	1	6
3	8	2	10
4	8	2	10
5	8	2	10
6	8	2	10
7	8	2	10
8	8	2	10
9	8	2	10
10	8	2	10
Total	74	18	92

However, if you use all odd-numbered segment lengths, you can incorporate larger segments in your account framework because odd-numbered segment lengths use only one segment unit each. For example, you could use ten 7-character segments in your account framework, which provides a total length of 70 characters, and a total size of 80.

Part 2: Microsoft Dynamics GP installation

This part contains information about installing Microsoft Dynamics GP and additional components included on the Microsoft Dynamics GP media on your first client. It also includes information about using Microsoft Dynamics GP Utilities to set up your system, and creating your first company. It contains the following chapters:

- [Chapter 6. “Install Microsoft Dynamics GP on the first computer.”](#) provides instructions for installing Microsoft Dynamics GP 2015.
- [Chapter 7. “Using Microsoft Dynamics GP Utilities.”](#) includes information about using Microsoft Dynamics GP Utilities to set up your system.
- [Chapter 8. “Installing additional components.”](#) contains information about additional features and products available for Microsoft Dynamics GP. Use these procedures to install additional components after you’ve already installed Microsoft Dynamics GP.
- [Chapter 9. “Creating a company.”](#) provides instructions for creating a company if you didn’t create one when you first used Microsoft Dynamics GP Utilities to prepare Microsoft Dynamics GP for use. You must have at least one company set up before you can start Microsoft Dynamics GP.
- [Chapter 10. “After installing Microsoft Dynamics GP.”](#) tells you how to log in to Microsoft Dynamics GP and register your Microsoft Dynamics GP modules.

Chapter 6: Install Microsoft Dynamics GP on the first computer

Use the information in this chapter to install Microsoft Dynamics GP 2015 on the first computer. This chapter contains the following sections:

- [Installation overview](#)
- [Installing Microsoft Dynamics GP \(first computer\)](#)

Installation overview

In a multiuser local area network environment, Microsoft Dynamics GP applications are typically installed on a server, and then on each client. However, Microsoft Dynamics GP is not required to be installed on the server. Each client will have access to data stored on the server. You can install your clients using the Microsoft Dynamics GP media or using a client installation package. For more about creating an installation package for your clients, see [Chapter 11. “Creating an installation package.”](#)

Installing Microsoft Dynamics GP (first computer)

Before beginning the installation, be sure you’ve completed the installation preparation steps listed in [Part 1. Preparation](#), and that no other applications are running.

To install Microsoft Dynamics GP (first computer):

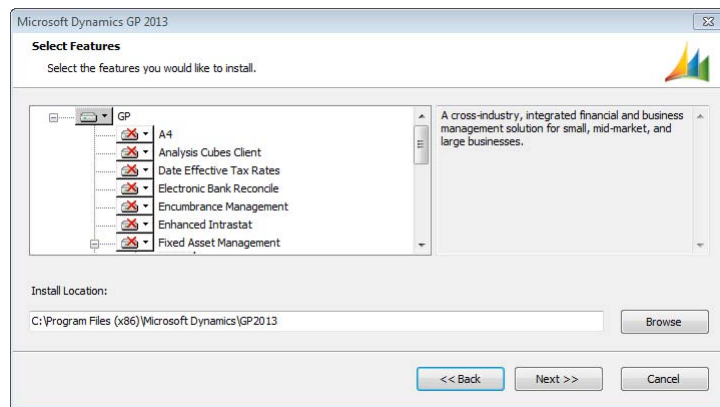
1. Be sure that you’re logged in to Windows as a user with system administrator privileges.
2. From the Microsoft Dynamics GP 2015 installation media, double-click the Setup.exe file to open the Microsoft Dynamics GP installation window.
3. If one or more of the following components isn’t installed on your computer, the Microsoft Dynamics GP 2015 Bootstrapper Setup window opens and you can choose to install the missing component or components.
 - Dexterity Shared Components 14.0
 - Microsoft Application Error Reporting 11.0
 - Microsoft Lync 2010 SDK Runtime
 - Microsoft SQL Server Native Client 10.0
 - Microsoft Windows Installer 4.5
 - Microsoft .NET Framework 3.5
 - Microsoft .NET Framework 4.5
 - Open XML SDK 2.0 for Microsoft Office
 - Visual C++ 2010 Runtime Libraries
 - Visual Basic for Applications Core

After all the components are installed, you may need to restart your computer before continuing the installation of Microsoft Dynamics GP.




4. Click Microsoft Dynamics GP.

The installation program verifies that your system has the minimum operating system required to run Microsoft Dynamics GP. If your system does not meet requirements, the installation will not continue.

5. If you are installing Microsoft Dynamics GP on a computer with an existing instance of Microsoft Dynamics GP 2015, select the Create new instance option, enter a name for the new instance, and then click Next.
6. In the Country/Region Selection window, select the primary country or region where you do business. Your selection affects which features are available to install. Some features are available only in selected countries or regions. Click Next.
7. Follow the instructions in the window to accept the software license agreement. To install Microsoft Dynamics GP, you must accept this agreement and click Next.
8. In the Select Features window, select the features to install.



When you click a button for a feature, a pop-up menu of options appears. Refer to the table for more information about each option.

Option	What happens
 Run from My Computer	The selected feature will be installed on the local hard disk. (This option installs the feature, but not sub-features.)
 Run all from My Computer	Will install the feature and all of its sub-features.
 Not Available	Will not install the selected feature or sub-features.

9. Specify the folder where you want the Microsoft Dynamics GP files installed. The default folder is C:\Program Files\Microsoft Dynamics\GP 2015. To select a different folder, click Browse.

After you have specified the installation folder, click Next.

10. In the SQL Server window, you can set up an ODBC data source, enter the name you assigned to the SQL Server when you installed Microsoft SQL Server. A data source name called Dynamics GP also is created using SQL Native Client.

If you don't want to set up an ODBC data source, mark the Do not create a data source option.

11. Select to use DYNAMICS as the system database name or enter a different name for the system database name.

By entering a custom name for the system database, you can have multiple system databases on the same SQL Server instance. You cannot change the system database name in Microsoft Dynamics GP Utilities.

Click Next.

12. If you have selected to install the Service Based Architecture feature, provide the Windows account that will be used as the service account for the Service Based Architecture service.

The Service Based Architecture feature will create a Windows service on the computer. The Windows account provided will be the identity used for this service.

13. In the Install Program window, click Install.
14. The Installation Progress window appears, where you can view the status of the installation.
15. In the Installation Complete window, click Exit.
16. Before you start Microsoft Dynamics GP Utilities, check for and install current update for Microsoft Dynamics GP 2015. See CustomerSource (<https://mbs.microsoft.com/customersource>) for the latest update information.



To start Microsoft Dynamics GP Utilities, you must have appropriate user privileges. Typically, this means being part of the Administrators group or the Power Users group. If you are using an operating system that has User Account Control (UAC) enabled, you will be prompted to run the program as a user with administrative privileges. Refer to your operating system's documentation for more information.

17. Start Microsoft Dynamics GP Utilities. Choose Start >> All Programs >> Microsoft Dynamics >> GP 2015 >> GP Utilities.
18. Follow the instructions in [Chapter 7. “Using Microsoft Dynamics GP Utilities.”](#) You can use the Microsoft Dynamics GP Utilities windows to set up your account framework and the Microsoft Dynamics GP system data tables, and to create your companies.
19. After using Microsoft Dynamics GP Utilities, you can install additional features or components that add specialized functionality to your Microsoft Dynamics GP system on the server computer. See [Chapter 8. “Installing additional components.”](#) for more information.

Chapter 7: Using Microsoft Dynamics GP Utilities

After you've installed Microsoft Dynamics GP, you need to complete a number of additional configuration procedures. To do this, you'll use an application called Microsoft Dynamics GP Utilities.



To start Microsoft Dynamics GP Utilities, you must have appropriate user privileges. Typically, this means being part of the Administrators group or the Power Users group. If you are using an operating system that has User Account Control (UAC) enabled, you will be prompted to run the program as a user with administrative privileges. Refer to your operating system's documentation for more information.

One of the most important—and difficult to change later—configuration tasks is setting up an account framework. Be sure to review [Chapter 5. “Account framework.”](#) before using the Microsoft Dynamics GP Utilities.

This chapter contains the following sections:

- [Microsoft Dynamics GP Utilities overview](#)
- [Installation options in Microsoft Dynamics GP Utilities](#)
- [Preparing Microsoft Dynamics GP for use with default settings](#)
- [Preparing Microsoft Dynamics GP for use with custom settings](#)
- [Additional installation tasks](#)
- [Adding sample company data](#)
- [Creating a company](#)
- [Removing SOP and Invoicing message](#)
- [Managing the Web Client SQL Server login](#)
- [Managing user authentication](#)

Microsoft Dynamics GP Utilities overview

You'll use Microsoft Dynamics GP Utilities to complete the following tasks after you've installed software and data on a server computer.

- Select whether to use default or custom settings to configure the system database.
- Create SQL Server databases for Microsoft Dynamics GP.
- Deploy predefined SQL Server Reporting Services reports that are included in Microsoft Dynamics GP.
- Deploy predefined Microsoft Excel[®] reports that are included in Microsoft Dynamics GP.
- Create your account framework and synchronize the Microsoft Dynamics GP dictionary, if you are providing custom settings.
- Select a default account framework and synchronize the Microsoft Dynamics GP dictionary, if you decide to use default settings.
- Define account sorting options, if you are providing custom settings.
- Enter the password for the DYNSA user.

- Set up the system password, which controls access to system management functions in Microsoft Dynamics GP, if you are providing custom settings.
- Synchronize sample data with your account framework, if you installed the sample company.
- Remove SOP and Invoicing message. This lets you remove a message that appears every time you enter a transaction in Sales Order Processing or Invoicing, if both modules are registered.
- Create a SQLServer login for Microsoft Dynamics GP Web Client
- Select the authentication type for the Microsoft Dynamics GP Web Client.
- Create additional companies, as needed.

Installation options in Microsoft Dynamics GP Utilities

When using Microsoft Dynamics GP Utilities, you can select an installation option to use default settings or to provide your own custom settings. If you select the Basic option, the default settings for the system database, the account framework, and system password are provided. If you select the Advanced option, you'll provide the settings to create the database, the account framework, and system password.

The following table compares the default settings of the Basic option with the custom settings of the Advanced option.

Setting	Basic installation	Advanced installation
System database	The system database files are created at the default locations defined in the SQL Server. A typical default location is \Program Files\Microsoft SQL Server\MSSQL\data.	You can specify the locations where the system database files are created in the SQL Server.
Account framework	The following account framework is created for you. Maximum number of segments: 5 Maximum Account Length: 45 Length of each segment: 9 Sorting Options: No sorting options by segment Account preview: xxxxxxxx-xxxxxxxx-xxxxxxxx-xxxxxxxx-xxxxxxxx	You can design your account framework by entering the maximum for the account length, the number of account segments, and the length of each segment. You also can select sorting options. For more information about designing an account framework, see Chapter 5, "Account framework."
System password	The system password is blank. This means that all users will have access to systemwide setup information. You can enter this password in Microsoft Dynamics GP.	You can enter a password for systemwide setup information.

Preparing Microsoft Dynamics GP for use with default settings

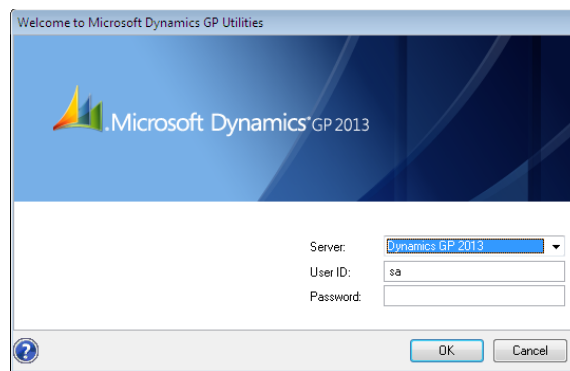
Use Microsoft Dynamics GP Utilities to prepare Microsoft Dynamics GP for use. Complete this procedure when you install Microsoft Dynamics GP for the first time. You need to do this only once.

With this procedure, you'll select the Basic option in the Installation Options window to use default settings for the system database, account framework, and system password. For more information about the Basic option, see [Installation options in Microsoft Dynamics GP Utilities](#) on page 36.

Before you use Microsoft Dynamics GP Utilities, check for and install the most current update for Microsoft Dynamics GP 2015. See CustomerSource (<https://mbs.microsoft.com/customersource>) for the latest update information. After installing the update, start Microsoft Dynamics GP Utilities.

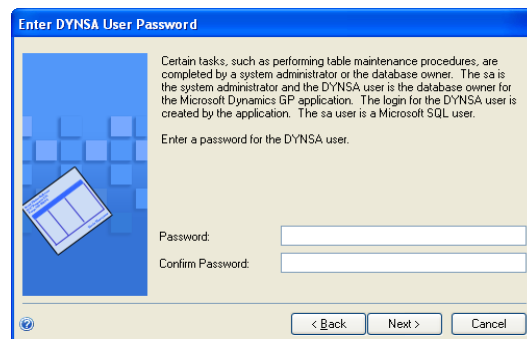
To prepare Microsoft Dynamics GP for use with default settings:

1. Start Microsoft Dynamics GP Utilities.
(Start >> All Programs >> Microsoft Dynamics >> GP 2015 >> GP Utilities)
2. In the Welcome to Microsoft Dynamics GP Utilities window, verify your server name, and enter a system administrator user ID and password; then click OK.



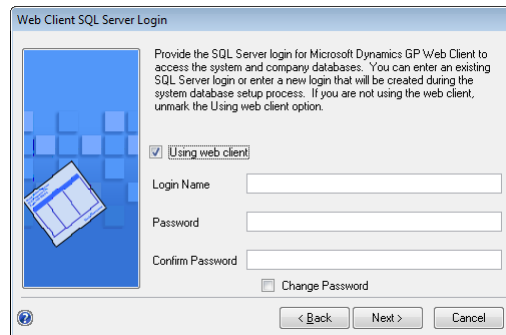
You must be logged in as a system administrator to complete database and system functions within Microsoft Dynamics GP Utilities.

3. The Welcome To Microsoft Dynamics GP Utilities window opens when you are logged into the server you selected. Read the message and click Next.
4. The Installation Options window appears. Mark Basic and then click Next.
5. If the DYNSA user doesn't have a password, the Enter DYNSA User Password window opens. Use this window to enter the password for the DYNSA user. The DYNSA user is the database owner and can perform tasks, such as table maintenance procedures. If you have multiple Microsoft Dynamics GP system databases on the same SQL Server instance, the DYNSA user is the database owner for all of the system databases. This password is case-sensitive.



Click Next.

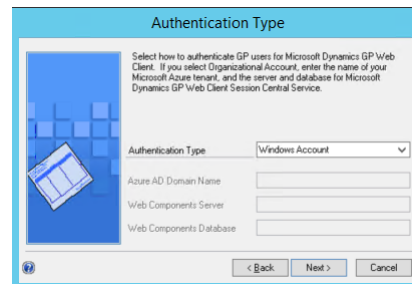
- In the Web Client SQL Server Login window, you can create a SQL Server login for Microsoft Dynamics GP Web Client. The Web Client SQL Server login is used for the connection to the SQL Server when a Microsoft Dynamics GP user has been configured with a Windows login.



Mark the Using web client option if you are creating a SQL Server login for the Microsoft Dynamics GP Web Client. Enter an existing SQL Server login or enter a new login. Then, enter a password and confirm your password. Click Next.

Unmark the Using web client option if you are not creating a login for the Microsoft Dynamics GP Web Client. Click Next.

- Select the authentication type for the Microsoft Dynamics GP web client. Accept the default Windows Account setting if GP users will be logging into the web client using their Windows domain credentials. Select Organizational Account if GP users will be logging into the web client using their organizational account credentials.



When selecting Organizational Account, additional settings will be required complete the setup. Provide the Azure AD domain name for the user accounts. An example is contoso.onmicrosoft.com. Provide the name of the SQL Server where the web components database is stored and the name of the web components database.

- In the Confirmation window, click Finish.

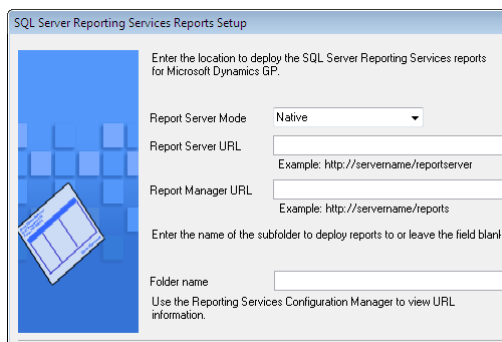
Microsoft Dynamics GP Utilities installs databases, installs initial module setup information, and sets up Microsoft Dynamics GP menus. These procedures may take several minutes to complete. The Server Installation Progress window describes the processes as they are completed.

- In the Business Intelligence Reports Setup window, select the business intelligence components to deploy. Click Next. The window that opens depends on the components you selected.



If you don't want to deploy business intelligence components, leave the components unmarked and click Next. The Additional Tasks window will reappear. Skip to step 11.

- The SQL Server Reporting Services Reports Setup window appears if you marked to deploy Reporting Services reports.



After selecting your report server mode, enter the locations to deploy the reports to.

Native mode location example.

Location	Example
Report Server URL	http://<servername>/ReportServer
Report Manager URL	http://<servername>/Reports

SharePoint Integrated mode location example.

SharePoint Integrated	
Location	Example
SharePoint Site	http://<servername>/Reports
Report Library	ReportsLibrary



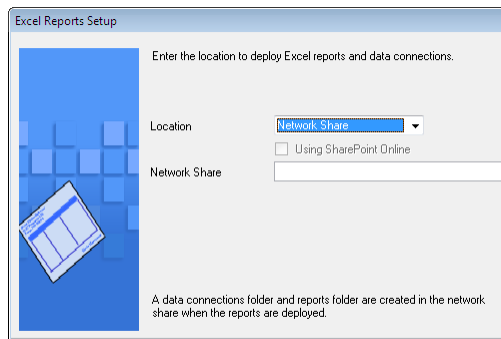
Be sure that your locations don't end with a slash. You can use the Reporting Services Configuration Manager to verify the Report Server Mode being used and the URL locations.

11. If you have selected Native as the report server mode, you can enter the name of the folder to deploy the reports to. By using a folder, you can deploy Reporting Services reports for multiple Microsoft Dynamics GP instances to a single Microsoft SQL Server Reporting Server. The default folder name is the name of the system database. If DYNAMICS is the system database name, the Folder Name field is blank. After deploying reports to the folder, you must to provide access to the folder.
12. Click Next.



If you don't have the appropriate permissions to deploy reports, a window opens where you can enter a domain\user name and the password you use to log in to Microsoft Windows.

- The Excel Reports Setup window appears if you marked to deploy Microsoft Excel reports.



Select the location to deploy the reports to.

Network share location example:

Network share	\\Servername\sharename
---------------	------------------------

If you have selected SharePoint as the location to deploy reports to, you can mark the Using SharePoint Online option if you are using Microsoft Office 365 and want to deploy Excel reports to a reports library in SharePoint Online 2010. Mark the Using SharePoint Online option to deploy reports only in the Microsoft Dynamics GP desktop client. Reports will not be deployed for the Microsoft Dynamics GP Web Client.

SharePoint location example:

SharePoint Site	http://<servername>/Reports
Data Connections Library	DataConnections
Report Library	ReportsLibrary

Be sure to use back slashes when you are entering the location for reports even if you are using a UNC path. You should also be sure that the location doesn't end in a slash.



If you don't have the appropriate permissions to deploy reports, a window opens where you can enter a domain\user name and the password you use to log in to Microsoft Windows.

- In the Additional Tasks window, you can choose to perform additional procedures, start Microsoft Dynamics GP, or end the installation. If you select any task, click Process; otherwise, click Exit.

See [Additional installation tasks](#) for more information about additional installation tasks.

Preparing Microsoft Dynamics GP for use with custom settings

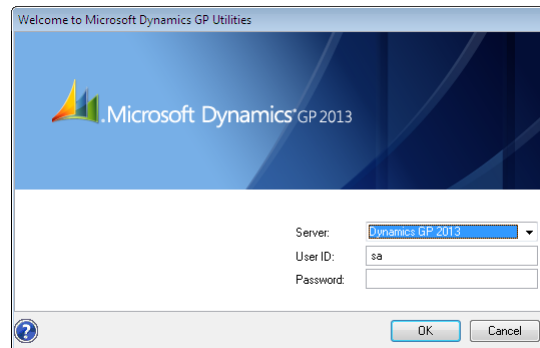
Use Microsoft Dynamics GP Utilities to prepare Microsoft Dynamics GP for use. Complete this procedure when you install Microsoft Dynamics GP for the first time. You need to do this only once.

With this procedure, you'll select the Advanced option in the Installation Options window to use custom settings for the system database, account framework, and system password. For more information about the Advanced option, see [Installation options in Microsoft Dynamics GP Utilities](#) on page 36.

Before you use Microsoft Dynamics GP Utilities, check for and install the most current update for Microsoft Dynamics GP 2015. See CustomerSource (<https://mbs.microsoft.com/customersource>) for the latest update information. After installing the update, start Microsoft Dynamics GP Utilities.

To prepare Microsoft Dynamics GP for use with custom settings:

1. Start Microsoft Dynamics GP Utilities.
(Start >> Programs >> Microsoft Dynamics >> GP 2015 >> GP Utilities)
2. In the Welcome to Microsoft Dynamics GP Utilities window, verify your server name, and enter a system administrator user ID and password; then click OK.



You must be logged in as a system administrator to complete database and system functions within Microsoft Dynamics GP Utilities.

3. The Welcome To Microsoft Dynamics GP Utilities window opens when you are logged into the server you selected. Read the message and click Next.
4. The Installation Options window appears. Mark Advanced and then click Next.

- In the Database Setup window, enter the location to create the data and log devices (files). For more information about disk and RAID configuration, see <http://go.microsoft.com/fwlink/?LinkId=263763>. Click Next.

- In the Set Up Account Framework window, enter a framework for the accounts for all Microsoft Dynamics GP companies, as well as all companies you may set up in the future.

Enter the maximum account length (up to 66 characters) and the maximum number of segments (up to 10) that you'll need for the charts of accounts in companies you set up now or in the future. Maximums you enter now will apply to all companies you plan to set up.

See [Planning your account framework](#) on page 26 for more information.

- In the Set Up Account Segment Lengths window, enter a name for each segment of the account, as well as the maximum length you'll use for each segment in the charts of accounts for your companies.

Segment	Name	Length
1	Segment1	3
2	Segment2	3
3	Segment3	3

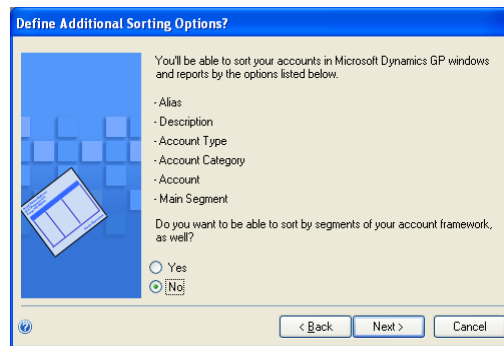
You should use descriptive names that clearly indicate how each segment will be used. These segment names will appear as the default segment names when you set up the account format for each company; you can change the names later, if necessary.

The length of each segment can be no longer than 66 characters. Maximums you enter now will apply to companies you set up later.

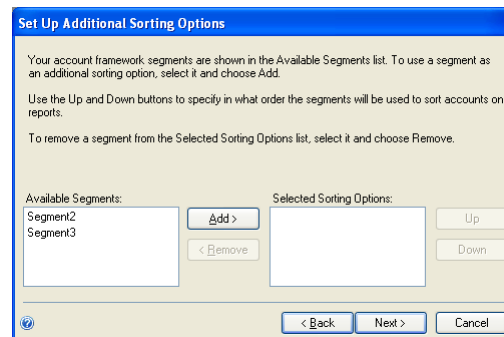


If you have more than one company, you may need to enter maximum segment lengths that exceed the 66-character account length maximum when the segment lengths are added together. The total size must be 82 or less. See [Choosing account framework storage size](#) on page 27 for more information.

8. Select sorting options in the Define Additional Sorting Options window. This window displays the predefined sorting options available in Microsoft Dynamics GP to sort account information in windows and on reports.



- If the displayed sorting options include the ways you'll need to sort account information, leave the No option marked and click Next, then continue to step 10.
- To select segments of your account framework to sort by, as well, mark Yes, then click Next. The Set Up Additional Sorting Options window appears. Continue to step 9.



9. If you selected Yes in step 8, select each account segment you want to use as a sorting option and click Add. You can define up to nine additional sorting options.

If you select more than one segment, use the Up and Down buttons to specify in what order the segments will be used to sort account information. Sorting

options are used to control the way accounts are displayed in Microsoft Dynamics GP windows, in all your companies.

- When you've finished selecting segments, click Next to verify your account framework in the Verify Account Framework window.



To make corrections if necessary, click Back until the appropriate window is displayed, then click Next in each window until the Verify Account Framework window is displayed again.

A report file called Acctfram.txt is created in the Data folder inside of the GP folder, which contains the same account framework information. This file, which is created only on the first client, stores account framework information for your reference. Be sure to make a backup of the Acctfram.txt file.

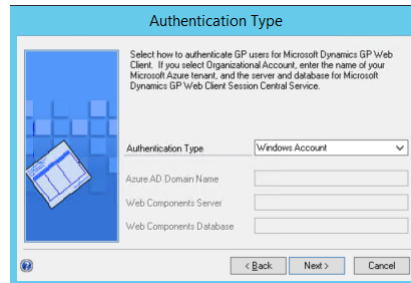
- If the DYNSA user doesn't have a password, the Enter DYNSA User Password window opens. Use this window to enter the password for the DYNSA user. The DYNSA user is the database owner and can perform tasks, such as table maintenance procedures. If you have multiple Microsoft Dynamics GP system databases on the same SQL Server instance, the DYNSA user is the database owner for all of the system databases. This password is case-sensitive.

- In the Web Client SQL Server Login window, you can create a SQL Server login for Microsoft Dynamics GP Web Client. The Web Client SQL Server login is used for the connection to the SQL Server when a Microsoft Dynamics GP user has been configured with a Windows login.

Mark the Using web client option if you are creating a SQL Server login for the Microsoft Dynamics GP Web Client. Enter an existing SQL Server login or enter a new login. Then, enter a password and confirm your password. Click Next.

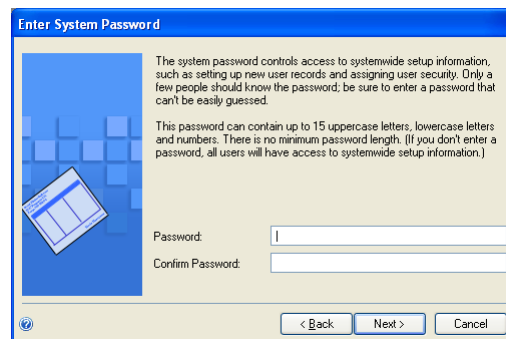
Unmark the Using web client option if you are not creating a login for the Microsoft Dynamics GP Web Client. Click Next.

13. Select the authentication type for the Microsoft Dynamics GP web client. Accept the default Windows Account setting if GP users will be logging into the web client using their Windows domain credentials. Select Organizational Account if GP users will be logging into the web client using their organizational account credentials.



When selecting Organizational Account, additional settings will be required complete the setup. Provide the Azure AD domain name for the user accounts. An example is contoso.onmicrosoft.com. Provide the name of the SQL Server where the web components database is stored and the name of the web components database.

14. In the Enter System Password window, enter the password to use to access Microsoft Dynamics GP system windows, reports, and utilities. This password is case-sensitive and will be used for control functions, such as user security.



15. In the Confirmation window, click Next.

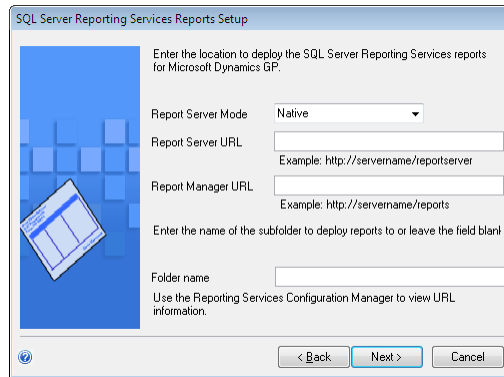
Microsoft Dynamics GP Utilities installs databases, installs initial module setup information, and sets up Microsoft Dynamics GP menus. These procedures may take several minutes to complete. The Server Installation Progress window describes the processes as they are completed.

16. In the Business Intelligence Reports Setup window, select the business intelligence components to deploy. Click Next. The window that opens depends on the components you selected.



If you don't want to deploy business intelligence components, leave the components unmarked and click Next. The Additional Tasks window will reappear. Skip to step 19.

- The SQL Server Reporting Services Reports Setup window appears if you marked to deploy Reporting Services reports.



After selecting your report server mode, enter the locations to deploy the reports to.

Native mode location example:

Location	Example
Report Server URL	http://<servername>/ReportServer
Report Manager URL	http://<servername>/Reports

SharePoint Integrated mode location example:

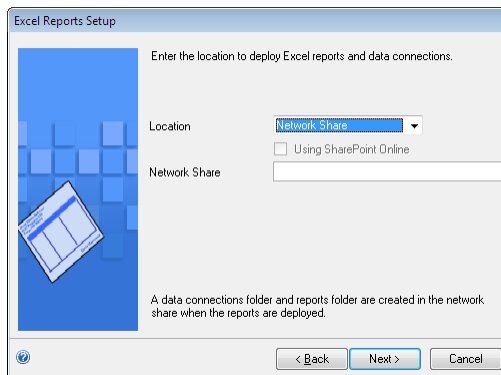
SharePoint Integrated	
Location	Example
SharePoint Site	http://<servername>/Reports
Report Library	ReportsLibrary

- If you have selected Native as the report server mode, you can enter the name of the folder to deploy the reports to. By using a folder, you can deploy Reporting Services reports for multiple Microsoft Dynamics GP instances to a single Microsoft SQL Server Reporting Server. The default folder name is the name of the system database. If DYNAMICS is the system database name, the Folder Name field is blank. After deploying reports to the folder, you must to provide access to the folder.
- Click Next.



If you don't have the appropriate permissions to deploy reports, a window opens where you can enter a domain\user name and the password you use to log in to Microsoft Windows.

- 20. The Excel Reports Setup window appears if you marked to deploy Excel reports.



- 21. Select the location to deploy the reports to.

Network share location example:

Network share	\\Servername\sharename
---------------	------------------------

If you have selected SharePoint as the location to deploy reports to, you can mark the Using SharePoint Online option if you are using Microsoft Office 365 and want to deploy Excel reports to a reports library in SharePoint Online 2010. Mark the Using SharePoint Online option to deploy reports only in the Microsoft Dynamics GP desktop client. Reports will not be deployed for the Microsoft Dynamics GP Web Client.

SharePoint location example:

SharePoint Site	http://<servername>/ReportServer
Data Connections Library	DataConnections
Report Library	ReportsLibrary

Click Next.



If you don't have the appropriate permissions to deploy reports, a window opens where you can enter a domain \user name and the password you use to log in to Microsoft Windows.

- 22. In the Additional Tasks window, you can choose to perform additional procedures, start Microsoft Dynamics GP, or end the installation. If you select any task, click Process; otherwise, click Exit.

See [Additional installation tasks](#) for more information about additional installation tasks.

Additional installation tasks

The Additional Tasks window in Microsoft Dynamics GP Utilities contains the following selections:

- Add sample company data
- Create a company
- Remove SOP and Invoicing message
- Update modified forms and reports
- Synchronize forms and reports dictionaries
- Manage Web Client SQL Server login
- Manage user authentication

The Update modified forms and reports option is used when upgrading from a previous release; it isn't used when you initially install Microsoft Dynamics GP. The Synchronize forms and report dictionaries option can be used at anytime when you want to synchronize your forms and reports to your account framework.

Start Microsoft Dynamics GP Utilities if you haven't already and follow the instructions in the Microsoft Dynamics GP Utilities windows until you open the Additional Tasks window. The following procedures assume that the Additional Tasks window is open.

Adding sample company data

You can add data for the sample company, Fabrikam, Inc., to your Microsoft Dynamics GP system to practice procedures. If a Microsoft Dynamics GP feature is installed, the sample data for that feature will be included when adding sample data. When you are adding the sample company, you can create LessonUser1 and LessonUser2 as sample users. These users will have access only to Fabrikam, Inc. The process of adding sample company data may take some time.

When you create the sample company, you can deploy business intelligence components, such as SQL Server Reporting Services reports. If you deployed reports for your system database, you can use the default report locations for the sample company.

To add sample company data:

1. Select the Add sample company data option in the Additional Tasks window and click Process.
2. In the Database Setup window, enter or accept the sample company database name and then select a default location for new files that will be created for the sample company.

TWO is the default sample company database name if the TWO database doesn't exist. You can only create LessonUser1 and LessonUser2 as sample users for the TWO sample company database using the Microsoft Dynamics GP Utilities.

If the sample company database has a different name than TWO, you must use the User Setup window to create lesson users for the sample company and then use the User Access Setup window to set up user access to the sample company.

3. In the Create Sample Users window, enter a password that will be used by the sample users, LessonUser1 and LessonUser2, to access the sample company. Reenter your password exactly as you previously entered it.

The Create Sample Users window appears if you are creating sample users for the TWO sample company database. If the sample company database is not the TWO database, you will not be able to create sample users using Microsoft Dynamics GP Utilities.

4. Click Next.
5. In the Confirmation window, click Finish.

The Server Installation Progress window appears, showing the progress as the tables are loaded.

6. In the Business Intelligence Reports Setup window, select the business intelligence components to deploy. Click Next. The window that opens depends on the components you selected.

If you don't want to deploy business intelligence components, leave the components unmarked and click Next. The Additional Tasks window will reappear.

7. The SQL Server Reporting Services Reports Setup window appears if you marked to deploy Reporting Services reports. After selecting your report server mode, enter the locations to deploy the reports to.

Native mode location example:

Location	Example
Report Server URL	http://<servername>/ReportServer
Report Manager URL	http://<servername>/Reports

SharePoint Integrated mode location example:

SharePoint Integrated	
Location	Example
SharePoint Site	http://<servername>/Reports
Report Library	ReportsLibrary



Be sure that your URL locations don't end with a slash. You can use the Reporting Services Configuration Manager to verify the Report Server Mode being used and the URL locations.

8. If you have selected Native as the report server mode, you can enter the name of the folder to deploy the reports to. By using a folder, you can deploy Reporting Services reports for multiple Microsoft Dynamics GP instances to a single Microsoft SQL Server Reporting Server. The default folder name is the name of the system database. If DYNAMICS is the system database name, the Folder Name field is blank. After deploying reports to the folder, you must provide access to the folder.
9. Click Next.



If you don't have the appropriate permissions to deploy reports, a window opens where you can enter a domain\user name and the password you use to log in to Microsoft Windows.

10. The CRM Reports Setup window appears, if you marked to deploy SQL Server Reporting Services reports with CRM data. Enter the CRM connection information. Microsoft Dynamics CRM supports only the native mode of deployment of SQL Server Reporting Services.

We recommend that you use Windows Authentication (Integrated Security). If you select to be prompted for credentials, you must mark the Use as Windows credentials when connecting to the data source option on the data source deployed.

11. The Excel Reports Setup window appears if you marked to deploy Excel reports. Select the location to deploy the reports to.

If you have selected SharePoint as the location to deploy reports to, you can mark the Using SharePoint Online option if you are using Microsoft Office 365 and want to deploy Excel reports to a reports library in SharePoint Online 2010. Mark the Using SharePoint Online option to deploy reports only in the Microsoft Dynamics GP desktop client. Reports will not be deployed for the Microsoft Dynamics GP Web Client.

Be sure to use back slashes when you are entering the location for reports even if you are using a UNC path. You should also be sure that the location doesn't end in a slash.

Network share location example:

Network share	\\Servername\sharename
---------------	------------------------

SharePoint location example:

SharePoint Site	http://<servername>/Reports
Data Connections Library	DataConnections
Report Library	ReportsLibrary

12. Click Next.



If you don't have the appropriate permissions to deploy reports, a window opens where you can enter a domain\user name and the password you use to log in to Microsoft Windows.

13. The Verify SQL Server window appears. Confirm your selections. If the selections are correct, click Finish.

The Business Intelligence Deployment Progress window appears. This window displays the report deployment progress.

14. After the reports deployed, the Additional Tasks window will reappear.

Creating a company

This option will create SQL tables that are needed for your company data. You must have at least one company set up before you can start Microsoft Dynamics GP.

When you create a new company, you can deploy business intelligence components, such as SQL Server Reporting Services reports. If you deployed reports for your system database, you can use the default report locations for the company.

When adding a company, you can select how to configure your company. You can use wizards to migrate data from Intuit QuickBooks or Peachtree and enter basic configuration options, or you can configure the company later using the Setup Checklist window in Microsoft Dynamics GP. To use a wizard to migrate or configure data, you must download and install the Rapid Implementation Tools for Microsoft Dynamics GP. If you haven't installed the Rapid Implementation Tools, click the Download and install the wizards link in the Company Setup Options window.

For each company you create, be sure the folder you specify must exist on the hard disk.

To create a company:

1. Select the Create a company option in the Additional Tasks window and click Process.
2. In the Create Company window, enter a company ID and name and select additional options.



The additional options, such as shipping methods and payment terms, may be overwritten if you choose to use the wizards to migrate QuickBooks or Peachtree data and enter basic configuration information in step 6.

3. Click Next.
4. In the Database Setup window, select a default location for new files that will be created.
5. The Confirmation window appears. Confirm your selections. If the selections are correct, click Finish.

The Server Installation Progress window appears, showing progress as tables loaded.

6. In the Business Intelligence Reports Setup window, select the business intelligence components to deploy. Click Next. The window that opens depends on the components you selected.

If you don't want to deploy business intelligence components, leave the components unmarked and click Next. The Company Setup Options window appears. Skip to step 13.

7. The SQL Server Reporting Services Reports Setup window appears if you marked to deploy Reporting Services reports. After selecting your report server mode, enter the locations to deploy the reports to.

Native mode location example:

Location	Example
Report Server URL	http://<servername>/ReportServer
Report Manager URL	http://<servername>/Reports

SharePoint Integrated mode location example:

SharePoint Integrated	
Location	Example
SharePoint Site	http://<servername>/Reports
Report Library	ReportsLibrary



Be sure that your URL locations don't end with a slash. You can use the Reporting Services Configuration Manager to verify the Report Server Mode being used and the URL locations.

8. If you have selected Native as the report server mode, you can enter the name of the folder to deploy the reports to. By using a folder, you can deploy Reporting Services reports for multiple Microsoft Dynamics GP instances to a single Microsoft SQL Server Reporting Server. The default folder name is the name of the system database. If DYNAMICS is the system database name, the Folder Name field is blank. After deploying reports to the folder, you must provide access to the folder.
9. Click Next.



If you don't have the appropriate permissions to deploy reports, a window opens where you can enter a domain\user name and the password you use to log in to Microsoft Windows.

10. The CRM Reports Setup window appears, if you marked to deploy SQL Server Reporting Services reports with CRM data. Enter the CRM connection information. Microsoft Dynamics CRM supports only the native mode of deployment of SQL Server Reporting Services.

We recommend that you use Windows Authentication (Integrated Security). If you select to be prompted for credentials, you must mark the Use as Windows credentials when connecting to the data source option on the data source deployed.

11. The Excel Reports Setup window appears if you marked to deploy Excel reports. Select the location to deploy the reports to.

If you have selected SharePoint as the location to deploy reports to, you can mark the Using SharePoint Online option if you are using Microsoft Office 365 and want to deploy Excel reports to a reports library in SharePoint Online 2010. Mark the Using SharePoint Online option to deploy reports only in the Microsoft Dynamics GP desktop client. Reports will not be deployed for the Microsoft Dynamics GP Web Client.

Be sure to use back slashes when you are entering the location for reports even if you are using a UNC path. You should also be sure that the location doesn't end in a slash.

Network share location example:

Network share	\\Servername\sharename
---------------	------------------------

SharePoint location example:

SharePoint Site	http://<servername>/Reports
Data Connections Library	DataConnections
Report Library	ReportsLibrary

12. Click Next.



If you don't have the appropriate permissions to deploy reports, a window opens where you can enter a domain\user name and the password you use to log in to Microsoft Windows.

13. The Verify SQL Server window appears. Confirm your selections. If the selections are correct, click Finish.

The Business Intelligence Deployment Progress window appears. This window displays the report deployment progress.

14. The Company Setup Options window appears, where you can select to use a wizard to migrate data from QuickBooks or Peachtree, use a wizard to enter basic configuration options, or configure the company later using the Setup Checklist window in Microsoft Dynamics GP.

To use a wizard to migrate or configure data, you must download and install the Rapid Implementation Tools for Microsoft Dynamics GP. If you haven't installed the Rapid Implementation Tools, click the Download and install the wizards link in the Company Setup Options window before you click Next.

15. Click Next. If you decided to configure your company later, the Additional Tasks window reappears. You can click Create a company to set up a second company, start Microsoft Dynamics GP, or Exit.

If you decided to use a wizard to migrate or configure your company data, the Rapid Migration Tool or the Rapid Configuration Tool starts.

Removing SOP and Invoicing message

Return to Microsoft Dynamics GP Utilities and complete this task after you've set up Sales Order Processing. The following message will appear every time you enter a transaction in Sales Order Processing or Invoicing, if both modules are registered: "Sales Order Processing and Invoicing modules are both installed. They do not share information. Transactions should be entered in one module only." To remove this message, select Remove SOP and Invoicing message in the Additional Tasks window and click Process, then follow the instructions in the window.

Managing the Web Client SQL Server login

Use the Manage Web Client SQL Server Login window to create or modify a SQL Server login for Microsoft Dynamics GP Web Client. By using the single Web Client SQL Server login, each web client user can access the web client by providing their standard Windows login credentials instead of using their own SQL Server login.

During the initial Microsoft Dynamics GP installation, you can create the SQL Server login. Each web client session can use the login to access SQL Server.

To manage the Web Client SQL Server login:

1. Select the Manage Web Client SQL Server Login option in the Additional Tasks window and click Process.
2. In the Manage Web Client SQL Server Login window, specify the SQL Server Login and password for the Web Client SQL Server login.
3. If the login has an existing password, you can mark the Change password option to enter a different password.
4. Click Save. The Additional Tasks window reappears.

Managing user authentication

Use the Manage user authentication process to change the authentication type for this Microsoft Dynamics GP instance. If there are accounts assigned for the current authentication type, the assigned accounts will be removed when the authentication type is changed. You cannot change the authentication type if there is an active workflow or a workflow that is currently pending user action.

During the initial Microsoft Dynamics GP installation, you selected an authentication type. If you upgraded to GP 2015 from a previous release, the authentication type was set to Windows Account automatically.

To manage the user authentication

1. Select the manage user authentication option in the Additional Tasks window and click Process.
2. In the Manage User Authentication window, select the Authentication Type drop down and select the authentication type.
3. If you have selected Organizational Account, provide the required configuration information for using Organizational Accounts.

Provide the Azure AD domain name for the user accounts. An example is contoso.onmicrosoft.com. Provide the name of the SQL Server where the web components database is stored and the name of the web components database.

4. Click OK. The Additional Tasks window reappears.

Chapter 8: Installing additional components

Depending on your organization's needs, you may have purchased additional features that add specialized functionality to your Microsoft Dynamics GP system. A Microsoft Dynamics GP feature can be a single function or a complete a range of related business and accounting tasks that use one or more modules. Several products that integrate with Microsoft Dynamics GP are included on the Microsoft Dynamics GP media.

This chapter contains the following sections:

- [Microsoft Dynamics GP features](#)
- [Adding or removing additional features](#)
- [Additional components](#)
- [Installing an additional component](#)

Microsoft Dynamics GP features

After you've installed Microsoft Dynamics GP 2015, you may decide to purchase an additional feature or remove a feature. Some features add a single function to your Microsoft Dynamics GP system while some, such as Manufacturing, allow you to complete a range of related business and accounting tasks that use one or more modules. You can use the Select Features window to install or uninstall a feature. For more information about accessing this window, see [Adding or removing additional features](#).

You can register Microsoft Dynamics GP using the Registration window (Administration >> Setup >> System >> Registration) after you install. For more information about registration, see [Registering Microsoft Dynamics GP](#) on page 70. All features are registered for the sample company, Fabrikam, Inc. For more information about the sample company, see [Adding sample company data](#) on page 50.

The following table lists the Microsoft Dynamics GP features. The features available depends on the country or region you selected when installing Microsoft Dynamics GP.

For all countries and regions

A4	Multilingual Checks
Analytical Accounting	Payment Document Management
Date Effective Tax Rates	Professional Services Tools Library
Electronic Bank Reconcile	Project Accounting
Encumbrance Management	Revenue/Expense Deferrals
Enhanced Intrastat	Safe Pay
Fixed Asset Management	Service Based Architecture
Grant Management	VAT Daybook
Human Resources Analysis Cubes Client	Web Client Runtime
Manufacturing	

For all countries and regions except Canada and United States

Bank Management	Scheduled Instalments
Direct Debits and Refunds	

For Canada

Canadian Payroll

For Austria, Belgium, France, Luxembourg, Netherlands, Spain, United Kingdom, and Ireland

Enhanced Intrastat

For the United States

Check Amounts to Words

Human Resources and Payroll Suite

For Belgium and France

Export Financial Data

We recommend that you install each Microsoft Dynamics GP feature and additional component that you are going to register on all client computers.

Adding or removing additional features

Use the installation wizard to add or remove features from your Microsoft Dynamics GP installation. You also can use the Program Maintenance window, opened from the Add or Remove Programs control panel, to add or remove features. You should make a complete backup of your data before adding or removing features. Removing a feature does not remove tables from the database.

Be sure to follow the instructions in the Microsoft Dynamics GP Utilities windows after installing a feature. Depending on the feature that you're installing, you may have to update tables and update your companies.

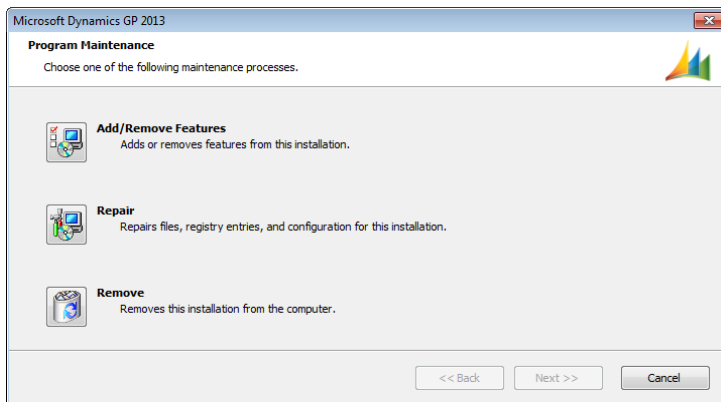
After you install a feature, be sure that the feature is at the current version. You can't log in to Microsoft Dynamics GP on a client computer if a product installed on the client has different version information than the server. You can use the GP_LoginErrors. file in your temporary directory to help resolve the version information issue. The log file will contain the product name, along with the dictionary version and the database version.

To add or remove additional features:

1. Start the installation wizard. You can use either of the following methods.
 - From the Microsoft Dynamics GP 2015 installation media, double-click the Setup.exe file to open the Microsoft Dynamics GP installation window. Select the existing instance of Microsoft Dynamics GP in the Instance Selection window and click Next.




—or—

- Open the Control Panel > Programs and Features or Uninstall a program. Select Microsoft Dynamics GP 2015. Click Change to open the Program Maintenance window.



2. Click Add/Remove Features.
3. In the Select Features window, select the features to install or uninstall. When you install a new feature, you won't reinstall features that have been installed previously.

When you click a button for a feature, a pop-up menu of options appears. Refer to the table for more information about each option.

Option	What happens
 Run from My Computer	The selected feature will be installed on the local hard disk. (This option installs the feature, but not sub-features.)
 Run all from My Computer	Will install the feature and all of its sub-features.
 Not Available	Will not install the selected feature or sub-features.

After you have specified the feature or features, click Next.

4. In the Install Program window, click Install.
5. The Installation Progress window appears, where you can view the status of the installation.
6. In the Installation Complete window, click Exit.
7. Start Microsoft Dynamics GP Utilities. Choose Start >> All Programs >> Microsoft Dynamics >> GP 2015 >> GP Utilities.



To start Microsoft Dynamics GP Utilities, you must have appropriate user privileges. Typically, this means being part of the Administrators group or the Power Users group. If you are using an operating system that has User Account Control (UAC) enabled, you will be prompted to run the program as a user with administrative privileges. Refer to your operating system's documentation for more information

8. The Welcome To Microsoft Dynamics GP Utilities window opens when you are logged into the server you selected. Read the message and click Next.
9. Follow the instructions in the Microsoft Dynamics GP Utilities windows. Depending on the feature that you're installing, you may have to update tables and update your companies.
10. After the processing is finished, the Additional Tasks window will open, where you can perform additional tasks, start Microsoft Dynamics GP, or exit the installation.

Additional components

A smaller set of additional components are separate installations available on the Microsoft Dynamics GP media. These additional components are listed on the main Microsoft Dynamics GP installation window for media. For more information about accessing this window, see [Installing an additional component](#) on page 61.

The following table lists the additional components.

Additional components	Description
Analysis Cubes Server	Installs Analysis Cube Server configuration wizards for SQL Server 2008 and SQL Server 2012.
Microsoft Dynamics GP Add-in for Microsoft Word	Installs the code necessary to enable template mapping so you can create and modify Word templates for Microsoft Dynamics GP.
Microsoft Dynamics GP Business Analyzer	Installs the Microsoft Dynamics GP Business Analyzer desktop application.
Connector for Microsoft Dynamics	The Connector for Microsoft Dynamics is an integration solution that can be used to integrate data between Microsoft Dynamics CRM and Microsoft Dynamics GP. The tool is intended for an implementation where Microsoft Dynamics CRM is used to manage business contacts, track leads, enter sales orders, and perform other sales and marketing activities, where the Microsoft Dynamics GP system is used to perform accounting functions, manage a company's chart of accounts, and maintain customer, vendor, item, employee, and other records.
eConnect	A document integration tool that enables high volume, high speed programmatic integration to and from applications and the Microsoft Dynamics GP back office solution.
Integration Manager	Allows you to perform a one-time data conversion from your existing system to Microsoft Dynamics GP products, or to perform ongoing integrations from other applications.
Personal Data Keeper	Use to enter time and expense transactions online and then synchronize with Project Accounting when online.
Tenant Services	

Additional components	Description
Tenant Service	A service that will provide tenant and user configuration information to applications. This service is required if setting up Microsoft Dynamics GP Web Client for multiple tenants.
Web Client	The web server components that will provide browser access to Microsoft Dynamics GP. Only install this component if you are going to use the Microsoft Dynamics GP Web Client
Web Components	Install the Service Based Architecture, Web Client and Web Management Console components. You can use selectable features to install some or all of these web components.
GP Web Resource Cache	Install on each session server to improve performance by enabling web client caching.
Web Services Runtime	The runtime engine that adds a Web Services interface to Microsoft Dynamics GP. Install this component if you want to run integrations that access Microsoft Dynamics GP data through Web Services. Several prerequisites must be met before you can install this component. Refer to the Web Services Installation and Administration Guide for more details.
Web Services Management Tools	Installs the Security Console and Exceptions Management Console, which you can use to administer security and exception information for Web Services for Microsoft Dynamics GP. Install this component if you want to manage Web Services from a workstation separate from where the Web Services Runtime is installed.
Workflow for SharePoint 2010	Server components of the Workflow feature that run within Microsoft SharePoint Server. Workflow automates the business approval process by routing documents or batches to one or more individuals for approval. Microsoft SharePoint Server must be installed before you can install Workflow server components.
Companion Application Services	A tool that enables you to connect your Microsoft Dynamics GP application to a data source.
GP PowerShell	PowerShell cmdlets that perform various configuration tasks for a Microsoft Dynamics GP web client installation.

There are some additional components that are released only on the CustomerSource Web site (<https://mbs.microsoft.com/customersource/support/downloads/servicepacks/>).

Installing an additional component

Use this procedure to install an additional component after you've installed Microsoft Dynamics GP. Before installing additional components, you should make a complete backup of your data.

Each additional component has its own installation instructions and documentation that you can access before you install the component. After you review the documentation you can install the component.

To install an additional component:

1. From the Microsoft Dynamics GP 2015 installation media, double-click the Setup.exe file to open the Microsoft Dynamics GP installation window.
2. Click the additional component you want to install and then click View Documentation.
3. After you review the documentation, install the component by clicking the additional component you want to install and then clicking Install.
4. Depending on the component you installed, you may be instructed to restart your computer.
5. When installation of the additional component is complete, you can either install another component or close the main Microsoft Dynamics GP installation window.

Chapter 9: Creating a company

Use the instructions in this chapter to create a company if you didn't create one when you first used Microsoft Dynamics GP Utilities. You must set up at least one company before you can start Microsoft Dynamics GP. See your System Setup instructions (Help >> Contents >> select Setting up the system) for information about setting up users and companies in Microsoft Dynamics GP.

This chapter contains the following sections:

- [Chart of accounts overview](#)
- [Adding a company using Microsoft Dynamics GP Utilities](#)

Chart of accounts overview

Several default charts of accounts are included with your Microsoft Dynamics GP system. You may want to use a default chart of accounts for the following reasons:

- The charts of accounts we've provided reflect sound accounting practices.
- Extensive research was done to determine the most commonly used account types for the industries we've included.
- Even if changes need to be made after a default chart of accounts is copied for the company, setup time will be greatly reduced by using a default chart.

Based on the business and industry types you choose for your company, you can install the chart of accounts best tailored for your company's business needs. For instance, if your company is a retail corporation, select Corporation from the Business Type list, as shown in the previous illustration, then select Retail from the Industry Type list. Accounts specific to corporations, such as stock accounts, will then be added to the chart of accounts specifically designed for retail industries.



If you use a default chart of accounts, you won't be able to shorten the account format. However, it can be lengthened to the maximum length you established in the Account Definition Setup window of Microsoft Dynamics GP Utilities, earlier in the installation process. Refer to the System Setup instructions (Help >> Contents >> select Setting up the system) for more information about lengthening account formats.

To preview the default chart of accounts for various business and industry types, review the Default Charts of Accounts for Microsoft Dynamics GP article (<http://go.microsoft.com/fwlink/?LinkId=89042>).

The default chart of accounts you choose for your company in this procedure is designed to be an accurate estimate of your company's business practices. However, we recommend that you review the accounts and make any necessary additions or changes. You'll be directed to the General Ledger documentation later in the setup process, if you need to modify the accounts.

Adding a company using Microsoft Dynamics GP Utilities

Use Microsoft Dynamics GP Utilities to create companies for Microsoft Dynamics GP. You must have at least one company set up before you can start Microsoft Dynamics GP.

When adding a company, you can select how to configure your company. You can use wizards to migrate data from QuickBooks or Peachtree and enter basic configuration options, or you can configure the company later using the Setup Checklist window in Microsoft Dynamics GP. To use a tool to migrate or configure data, you must download and install the Rapid Implementation Tools for Microsoft Dynamics GP. If you haven't installed the Rapid Implementation Tools, click the Download and install the wizards link in the Company Setup Options window.

Before you begin, be sure you have adequate space to add companies (including the sample company) to your SQL database. Each company requires about 300MB of free space.

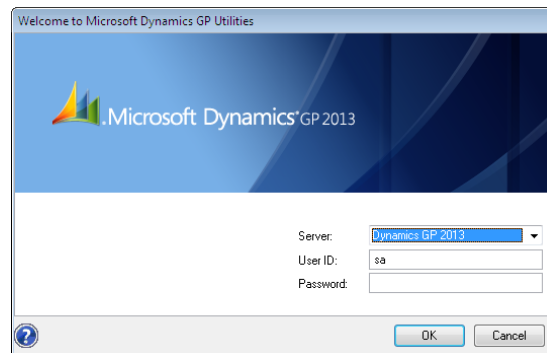
When you create a company, you can deploy SQL Server Reporting Services reports and Excel reports using Microsoft Dynamics GP Utilities. If you have deployed reports for your system database, you can use the default report locations for the company.



To start Microsoft Dynamics GP Utilities, you must have appropriate user privileges. Typically, this means being part of the Administrators group or the Power Users group. If you are using an operating system that has User Account Control (UAC) enabled, you will be prompted to run the program as a user with administrative privileges. Refer to your operating system's documentation for more information.

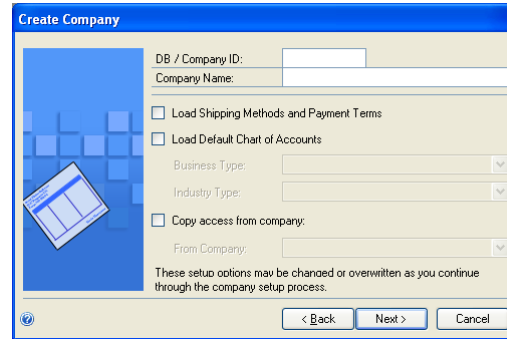
To add a company using Microsoft Dynamics GP Utilities:

1. Start Microsoft Dynamics GP Utilities.
(Start >> Programs >> Microsoft Dynamics >> GP 2015 >> GP Utilities)
2. In the Welcome to Microsoft Dynamics GP Utilities window, verify your server name, and enter a system administrator user ID and Password; then click Next.



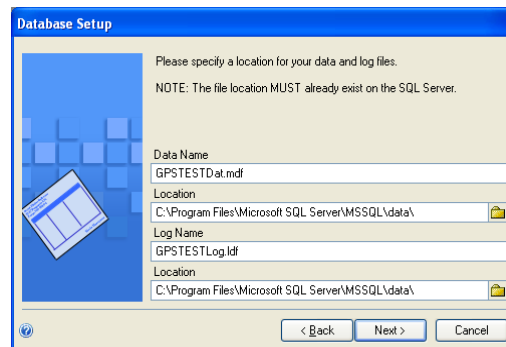
3. In the Welcome to Microsoft Dynamics GP Utilities window, review the information and click Next.
4. The Upgrade Microsoft Dynamics GP window opens, indicating that Microsoft Dynamics GP is at the current version. Click Next to verify version information for companies.
5. After companies are verified, the Additional Tasks window opens. Select Create a company and then click Process.

6. The Create Company window opens, where you can enter a database/company ID, and a company name. You also can select the following options.
 - Mark to load shipping methods and payment terms.
 - Mark the Load Default Chart of Accounts option and click a business and industry type. For more information about charts of accounts, see [Chart of accounts overview](#) on page 63.
 - Copy access from another company, except from the sample company, Fabrikam, Inc.



If you choose to use wizards to migrate QuickBooks or Peachtree data and enter basic configuration information in step 10, the shipping methods and payment terms and the chart of accounts information you have loaded may change.

7. Click Next after entering and selecting company information.
8. The Database Setup window appears. Enter the location where the data and log devices should be created. Click Next.



9. The Very SQL Server window appears. Confirm your selections. If the selections are correct, click Finish.

The Server Installation Progress window appears, showing progress as tables loaded.

10. In the Business Intelligence Reports Setup window, select the business intelligence components to deploy. Click Next. The window that opens depends on the components you selected.

If you don't want to deploy business intelligence components, leave the components unmarked and click Next. The Company Setup Options window appears. Skip to step 18.

11. The SQL Server Reporting Services Reports Setup window appears if you marked to deploy Reporting Services reports. After selecting your report server mode, enter the locations to deploy the reports to. Be sure that the location you enter does not end with a slash.

Native mode location example:

Location	Example
Report Server URL	http://<servername>/ReportServer
Report Manager URL	http://<servername>/Reports

SharePoint Integrated mode location example:

SharePoint Integrated	
Location	Example
SharePoint Site	http://<servername>/Reports
Report Library	ReportsLibrary

12. If you have selected Native as the report server mode, you can enter the name of the folder to deploy the reports to. By using a folder, you can deploy Reporting Services reports for multiple Microsoft Dynamics GP instances to a single Microsoft SQL Server Reporting Server. The default folder name is the name of the system database. If DYNAMICS is the system database name, the Folder Name field is blank. After deploying reports to the folder, you must provide access to the folder.
13. Click Next.



If you don't have the appropriate permissions to deploy reports, a window opens where you can enter a domain\user name and the password you use to log in to Microsoft Windows.

14. The CRM Reports Setup window appears, if you marked to deploy SQL Server Reporting Services reports with CRM data. Enter the CRM connection information.

We recommend that you use Windows Authentication (Integrated Security). If you select to be prompted for credentials, you must mark the Use as Windows credentials when connecting to the data source option on the data source deployed.

You must be using SQL Server 2012 Reporting Services or later and Microsoft Dynamics CRM 2011 or later to deploy SQL Server Reporting Services reports and metrics that includes CRM data. Microsoft Dynamics CRM supports only the native mode of deployment of SQL Server Reporting Services.

15. Click Next.



If you don't have the appropriate permissions to deploy reports, a window opens where you can enter a domain\user name and the password you use to log in to Microsoft Windows.

16. The Excel Reports Setup window appears if you marked to deploy Excel reports. Select the location to deploy the reports to.

If you have selected SharePoint as the location to deploy reports to, you can mark the Using SharePoint Online option if you are using Microsoft Office 365 and want to deploy Excel reports to a reports library in SharePoint Online 2010. Mark the Using SharePoint Online option to deploy reports only in the Microsoft Dynamics GP desktop client. Reports will not be deployed for the Microsoft Dynamics GP Web Client.

Be sure to use back slashes when you are entering the location for reports even if you are using a UNC path. You should also be sure that the location doesn't end in a slash.

Network share location example:

Network share	\\Servername\sharename
---------------	------------------------

SharePoint location example:

SharePoint Site	http://<servername>/ReportServer
Data Connections Library	DataConnections
Report Library	ReportsLibrary

17. Click Next.



If you don't have the appropriate permissions to deploy reports, a window opens where you can enter a domain\user name and the password you use to log in to Microsoft Windows.

18. The Verify SQL Server window appears. Confirm your selections. If the selections are correct, click Finish.

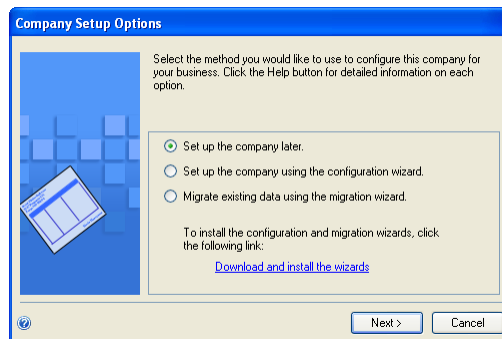
The Business Intelligence Deployment Progress window appears. This window displays the report deployment progress.

19. The Company Setup Options window appears, where you can select one of the following options to configure your company.

- Mark the Set up the company later option to set up your company at another time. When you are ready to set up data for your company, you can use wizards to migrate data from QuickBooks or Peachtree and enter basic configuration options, or you can configure the company using the Setup Checklist window in Microsoft Dynamics GP.

- Mark the Set up the company using the configuration wizard option to use the Rapid Configuration Tool for Microsoft Dynamics GP. The Rapid Configuration Tool helps you enter the basic setup information required for Microsoft Dynamics GP. With the Rapid Configuration Tool, you can start with a standard industry configuration, modify the configuration data, and then import the data into Microsoft Dynamics GP. Or, you can import a configuration from a Microsoft Office Excel workbook prepared by a Microsoft Dynamics GP partner or business consultant.
- Mark the Migrate existing data using the migration wizard option to use the Rapid Migration Tool for Microsoft Dynamics GP. The Rapid Migration Tool migrates QuickBooks data or Peachtree to Microsoft Dynamics GP. You can migrate master records, transactions, and configuration settings such as payment terms and shipping methods. Master records include customer records, vendor records, item records, and account records. Transactions include open payables transactions, open receivables transactions, open invoices transactions, and purchase orders. You also can review and edit information before you complete the migration.

To use a tool to migrate or configure data, you must download and install the Rapid Implementation Tools for Microsoft Dynamics GP. If you haven't installed the Rapid Implementation Tools, click the Download and install the wizards link.



20. Click Next. If you decided to configure your company later, the Additional Tasks window reappears. You can click Create a company to set up a second company, start Microsoft Dynamics GP, or Exit.

If you decided to migrate or configure your company data, the Rapid Migration Tool or the Rapid Configuration Tool starts.

Chapter 10: After installing Microsoft Dynamics GP

Use the information in this chapter to log in to Microsoft Dynamics GP for the first time and register Microsoft Dynamics GP. You also may have to grant user access to alternate Microsoft Dynamics GP windows and reports.

This chapter contains the following sections:

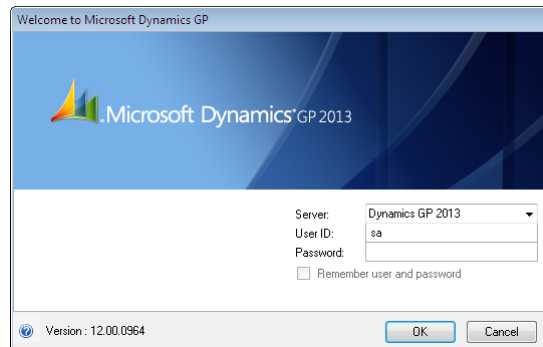
- [Logging in to and quitting Microsoft Dynamics GP](#)
- [Registering Microsoft Dynamics GP](#)
- [Security for Microsoft Dynamics GP](#)
- [Tasks for SQL Server Reporting Services reports](#)

Logging in to and quitting Microsoft Dynamics GP

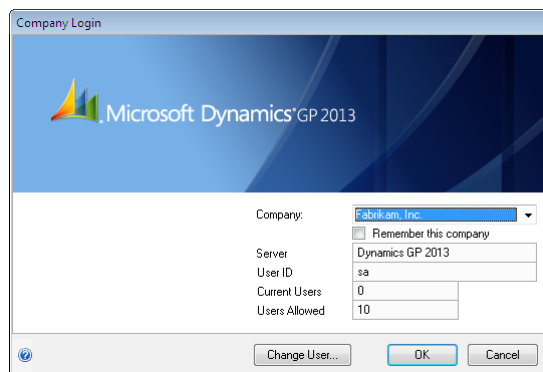
If you have trouble starting Microsoft Dynamics GP, contact your network administrator.

To log in to Microsoft Dynamics GP:

1. Choose Start >> Programs >> Microsoft Dynamics >> GP 2015 >> GP. The Welcome to Microsoft Dynamics GP window appears.



2. Enter your user ID and password. Passwords are case-sensitive.
3. Click OK. The Company Login window appears.



4. Select a company and click OK. The Microsoft Dynamics GP main menu appears.

To switch to a different company while you are working in Microsoft Dynamics GP, choose Microsoft Dynamics GP menu >> User and Company.

To quit Microsoft Dynamics GP:

1. Save your work in the window you are working in.
2. Choose Microsoft Dynamics GP menu >> Exit.

Registering Microsoft Dynamics GP

By registering your software, we can provide you with better service. We can gather information about additional needs you have and how Microsoft Dynamics GP can be improved. Software registration also eliminates unauthorized use of the software without imposing restrictive copy protection.

You can enter your site name and registration keys for Microsoft Dynamics GP in the Registration window (Administration>> Setup >> System >> Registration).



You must register Microsoft Dynamics GP before you can use it. Enter your site name and registration keys exactly as they appear on your registration document. If you don't register a module before you begin to use it, you won't be able to open any transaction entry window. Modules in the sample company, Fabrikam, Inc., are registered and you can use the sample company to practice procedures.

After you've registered Microsoft Dynamics GP, you won't need to register additional companies that you add. To verify that a module has been registered, open the Microsoft Dynamics GP Options window (Help >> About Microsoft Dynamics GP >> Options). Registered modules have a check mark in the Registered column.

Security for Microsoft Dynamics GP

The default security settings in Microsoft Dynamics GP allow all users access to only the windows and forms in Microsoft Dynamics GP that are needed to log in to the application. After setting up new user records, you should set access to companies and set up security for new users. To learn more about setting up security, refer to the System Setup Guide (Help >> Contents >> select Setting up the System).

Each time you install a new feature or component in Microsoft Dynamics GP, such as Human Resources, you must set up security for that feature or component. For example, if you have been using Microsoft Dynamics GP for a year and you just installed Human Resources, you will need to set up access to Human Resources before anyone can use it.

Refer to the Planning For Security document (C:\Program Files\Microsoft Dynamics\GP\Documentation\Manuals\SecurityPlanning.pdf) or to the System Setup Guide (Help >> Contents >> select Setting up the System) for more information about security.

Tasks for SQL Server Reporting Services reports

Review the following tasks.

Security

After deploying the Microsoft Dynamics GP SQL Server Reporting Services reports, the only individuals who will be able to access or view the reports within the Report Manager are those users who are members of the web server's local administrator group and local administrators on SQL Server. The web site administrator has to implement and grant access to the Reporting Services Web site and database objects required to print reports.

If you have deployed reports using the SharePoint integrated mode and have already assigned permissions to users, those same users will have access to report server items and operations immediately after you configure the integration settings between Microsoft SharePoint and a report server. You can use existing permissions to upload report definitions and other documents, view reports, create subscriptions, and manage items.

If you have not assigned permissions, assign user and group accounts to predefined SharePoint groups. You also can create new permission levels and groups, or modify existing ones to vary server access permissions as specific needs arise.

You can deploy SQL Server Reporting Services reports for multiple Microsoft Dynamics GP instances to a single Microsoft SQL Server Reporting Server. If you have deployed reports to a folder on a Microsoft SQL Server Reporting Server using the Native mode, you must to provide access to the folder.

Microsoft Dynamics CRM

Before you render a SQL Server Reporting Services report with CRM data, be sure to start the Microsoft Dynamics CRM application to initialize data.

Part 3: Microsoft Dynamics GP client installation

This part contains information about installing Microsoft Dynamics GP on client machines. It contains the following chapters:

- [Chapter 11. “Creating an installation package.”](#) contains instructions to create a client installation package on a network share location.
- [Chapter 12. “Microsoft Dynamics GP on subsequent computers.”](#) provides instructions for installing Microsoft Dynamics GP on a client and synchronizing the Microsoft Dynamics GP dictionary on each additional client with your account framework on the server.

Chapter 11: Creating an installation package

Instead of physically going to each client computer to install Microsoft Dynamics GP, you can use an installation package to install Microsoft Dynamics GP on multiple client computers. An installation package stores the files required to install a custom configured installation in a shared network location you set up. How Microsoft Dynamics GP is installed on the client computer using the installation package depends on the tools and applications you use.

This chapter contains the following sections:

- [Installation package overview](#)
- [Creating an installation package](#)

Installation package overview

You can use a client installation package to install Microsoft Dynamics GP on additional client computers without having to physically go to each client computer and use the Microsoft Dynamics GP installation wizard. When you create an installation package, the installation package stores the files required to install a custom configured Microsoft Dynamics GP installation.

We recommend that you install the following components on each client computer. You can install these components from the Microsoft Dynamics GP 2015 media.

- Microsoft Windows Installer 4.5
- Microsoft .NET Framework 3.5
- Microsoft .NET Framework 4.5
- Microsoft SQL Server Native Client 10.0
- Microsoft Dexterity Shared Components 14.0
- Microsoft Application Error Reporting 11.0
- Microsoft Lync 2010 SDK Runtime
- Open XML SDK 2.0 for Microsoft Office
- Visual C++ 2013 Runtime Libraries
- Visual Basic for Applications Core

These components aren't installed for you if you set up your installation package to install Microsoft Dynamics GP using the GreatPlains.msi file. If these components are not installed on the client computer, Microsoft Dynamics GP won't be installed. These components are installed for you if you set up your installation package to install Microsoft Dynamics GP using the Setup.exe file.

When creating the installation package, you'll select the shared network location where the installation package will be created, select Microsoft Dynamics GP features, and enter a location where Microsoft Dynamics GP will be installed on each client computer.

The installation package must be created in a shared network location that each client computer has access to. The location where Microsoft Dynamics GP will be installed must be a valid location for each client computer.

After the installation package is created, it can be run from the shared network location to install the Microsoft Dynamics GP client without the user having to make install decisions. A progress window shows how the process is progressing.

After Microsoft Dynamics GP is installed and the user on the client has started Microsoft Dynamics GP, the user may have to include new code and use Microsoft Dynamics GP Utilities to synchronize the account framework.

How Microsoft Dynamics GP is installed on the client computer using the installation package depends on the tools and applications you use. You can send an email with a link to the installation package. The user can click the link to install Microsoft Dynamics GP. Or, you can create a deployment package using a software distribution tool such as Systems Management Server so that Microsoft Dynamics GP is automatically installed after the user logs into his or her computer.

Creating an installation package

You can use an installation package to install Microsoft Dynamics GP on your client computers. An installation package contains all the information required to install Microsoft Dynamics GP.




To create an installation package:

1. Create a shared network location or verify that the client computers have access to a shared network location.
2. From the Microsoft Dynamics GP 2015 installation media, double-click the Setup.exe file.
3. Click Create Installation Package.
4. In the Installation Location window, enter or select the folder where the installation package will be created. It is recommended that you use an Universal Naming Convention (UNC) path or a mapped drive letter that is common across all targeted machines. The network location must be accessible from any computer that will have Microsoft Dynamics GP 2015 installed on it using the installation package.

Click Next.

5. In the Country/Region Selection window, select the primary country or region where you do business. Click Next.
6. In the Select Features window, select the features to install.

When you click a button for a feature, a pop-up menu of options appears. Refer to the table for more information about each option.

Option	What happens
 Run from My Computer	The selected feature will be installed on the local hard disk. (This option installs the feature, but not sub-features.)
 Run all from My Computer	Will install the feature and all of its sub-features.
 Not Available	Will not install the selected feature or sub-features.

We recommend that you install each Microsoft Dynamics GP feature and additional component that you are going to register on all client computers.

7. Specify the location on the client computer where you want the Microsoft Dynamics GP files installed. If you don't enter the location, the default location is \Program Files\Microsoft Dynamics\GP on the hard disk that has the operating system installed.

Be sure that the location is a valid location for every computer on which the installation package is used to install Microsoft Dynamics GP 2015.

After you have specified the installation folder, click Next.

8. To set up an ODBC data source, enter the name you assigned to the SQL Server when you installed Microsoft SQL Server. A data source name called Dynamics GP also is created using SQL Native Client. If you don't want to set up an ODBC data source, mark the Do not create a data source option.
9. Select the system database name.

Click Next.

10. Specify the location of the Reports dictionary and the Forms dictionary. The location where dictionaries are must be a valid location for each client computer. The locations are written to the Dex.ini file. Click Next.
11. Specify the location of the OLE Notes files and Letter Wizard files. Click Next.



Microsoft Dynamics GP uses the Document Attachment Management functionality instead of OLE objects.

12. In the Install Program window, click Install.
13. The Installation Progress window appears, where you can view the status of the installation.
14. In the Create Installation Package Complete window, click Finish.

The installation package is installed in the shared network location you specified. The installation package stores the files, such as Great Plains.msi and Setup.exe, required to install a custom configured Microsoft Dynamics GP installation.

15. How Microsoft Dynamics GP is installed on the client computer using the installation package depends on the tools and applications you use. You can send an email with a link to the installation package. Or, you can create a deployment package using a software distribution tool such as Systems Management Server so that Microsoft Dynamics GP is automatically installed after the user logs into their computer.

For more information about deployment, see the Documentation and resources for Microsoft Dynamics GP 2015 Web site (<http://go.microsoft.com/fwlink/?LinkId=249465>).

Chapter 12: Microsoft Dynamics GP on subsequent computers

Use the information in this chapter to install Microsoft Dynamics GP 2015 on each client computer. You also use Microsoft Dynamics GP Utilities to synchronize the Microsoft Dynamics GP dictionary on each additional client with your account framework on the server.

This chapter contains the following sections:

- [*Installation overview*](#)
- [*Installing Microsoft Dynamics GP on an additional computer*](#)
- [*Synchronizing a client's account framework*](#)
- [*Multiple instances of Microsoft Dynamics GP*](#)

Installation overview

In a multiuser local area network environment, Microsoft Dynamics GP applications are typically installed on a server, and then on each client. However, Microsoft Dynamics GP is not required to be installed on the server. Each client will have access to data stored on the server. You can install clients using the Microsoft Dynamics GP media or using a client installation package. For more about creating an installation package for your clients, see [Chapter 11, "Creating an installation package."](#)

When you install Microsoft Dynamics GP, the Distributed Process Server (DPS) and the Distributed Process Manager (DPM) are installed automatically. You can specify which computers in your system are process servers, and which tasks will be completed on those process servers. A process server is an application that allows users to direct the processing such as posting or printing checks and maintenance procedures to another computer on the network. The Distributed Process Manager is the application that tracks activity on all clients and process servers. See your System Administrator's Guide (Help >> Contents >> select System administration) for more information.

Installing Microsoft Dynamics GP on an additional computer

Use the information in this section to install a client in a multiuser system after you've installed Microsoft Dynamics GP 2015 on the server or the first computer and created your first company.

To install Microsoft Dynamics GP on an additional computer:

1. From the Microsoft Dynamics GP 2015 installation media, double-click the Setup.exe file to open the Microsoft Dynamics GP installation window.
2. Click Microsoft Dynamics GP.




The installation program verifies that your system has the minimum operating system required to run Microsoft Dynamics GP. If your system does not meet requirements, the installation will not continue.

3. Select a new Microsoft Dynamics GP instance and click Next.

If you are installing Microsoft Dynamics GP on a computer with an existing instance of Microsoft Dynamics GP, select Create a new instance and enter a name for the new instance. See [Multiple instances of Microsoft Dynamics GP](#) on page 83 for more information.

4. In the Select a Country/Region window, select the primary country or region where you do business. Click Next.
5. Follow the instructions in the window to accept the software license agreement. To install Microsoft Dynamics GP, you must accept this agreement.
6. In the Select Features window, select the features to install.

When you click a button for a feature, a pop-up menu of options appears. Refer to the table for more information about each option.

Option	What happens
 Run from My Computer	Will install the feature and all of its sub-features.
 Run all from My Computer	The selected feature will be installed on the local hard disk. (This option installs the feature, but not sub-features.)
 Not Available	Will not install the selected feature or sub-features.

We recommend that you install each Microsoft Dynamics GP feature and additional component that you are going to register on all client computers.

7. Specify the folder where you want the Microsoft Dynamics GP files installed. The default folder is C:\Program Files\Microsoft Dynamics\GP. To select a different folder, click Browse.

After you have specified the installation folder, click Next.

8. To set up an ODBC data source, enter the name you assigned to the SQL Server when you installed Microsoft SQL Server. A data source name called Dynamics GP also is created using SQL Native Client. If you don't want to set up an ODBC data source, mark the Do not create a data source option.
9. Select the system database name. If you selected Enter custom name, enter the system database name.

Click Next.

10. If you have selected to install the Service Based Architecture feature, provide the Windows account that will be used as the service account for the Service Based Architecture service.

Screen

The Service Based Architecture feature will create a Windows service on the computer. The Windows account provided will be the identity used for this service.

11. In the Install Program window, click Install.

12. The Installation Progress window appears, where you can view the status of the installation.
13. In the Installation Complete window, click Finish.
14. Before you start Microsoft Dynamics GP Utilities, check for and install current update for Microsoft Dynamics GP 2015. See CustomerSource (<http://go.microsoft.com/fwlink/?LinkId=249465>) for the latest update information.



To start Microsoft Dynamics GP Utilities, you must have appropriate user privileges. Typically, this means being part of the Administrators group or the Power Users group. If you are using an operating system that has User Account Control (UAC) enabled, you will be prompted to run the program as a user with administrative privileges. Refer to your operating system's documentation for more information.

15. Start Microsoft Dynamics GP Utilities. Choose Start >> All Programs >> Microsoft Dynamics >> GP 2015 >> GP Utilities.
16. Follow the instructions in the Microsoft Dynamics GP Utilities windows to synchronize your account framework. See [Synchronizing a client's account framework](#) on page 82 for more information.
17. After using Microsoft Dynamics GP Utilities, you can install additional component applications. See [Chapter 8. "Installing additional components."](#) for more information.

Synchronizing a client's account framework

Synchronize the account framework of each client where you install Microsoft Dynamics GP.

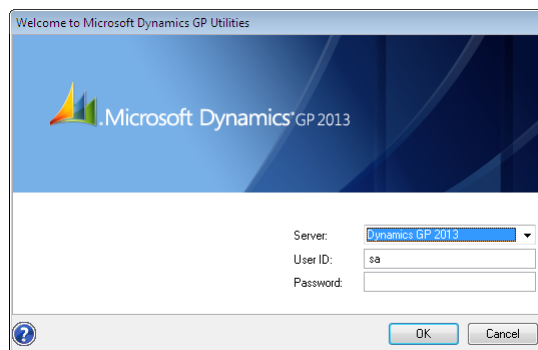
Microsoft Dynamics GP Utilities uses the scripts and files installed previously to complete the client setup. In addition, you can use Microsoft Dynamics GP Utilities to complete various maintenance procedures, now and on an ongoing basis.



To start Microsoft Dynamics GP Utilities, you must have appropriate user privileges. Typically, this means being part of the Administrators group or the Power Users group. If you are using an operating system that has User Account Control (UAC) enabled, you will be prompted to run the program as a user with administrative privileges. Refer to your operating system's documentation for more information.

To synchronize a client's account framework:

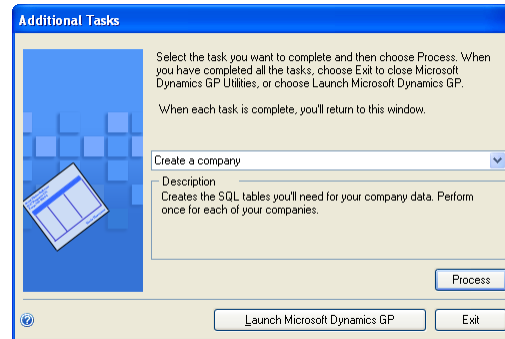
1. Start Microsoft Dynamics GP Utilities.
(Start >> Programs >> Microsoft Dynamics >> GP 2015 >> GP Utilities)
2. In the Welcome to Microsoft Dynamics GP Utilities window, verify your server name, and enter a user ID and password. Click Next.



3. In the Welcome To Microsoft Dynamics GP Utilities window, click Next.

The Microsoft Dynamics GP dictionary is synchronized automatically with your account framework.

4. In the Additional Tasks window, you can choose to complete additional tasks, launch Microsoft Dynamics GP, or end the installation. If you select any task, choose Process; otherwise, click Exit.



5. Repeat the client installation process for each computer you'll use as a client or process server for Microsoft Dynamics GP.

Multiple instances of Microsoft Dynamics GP

You can have multiple instances—installations—of Microsoft Dynamics GP on the same computer. Multiple instances are typically installed on client computers. You may want to use an additional instance of Microsoft Dynamics GP for testing purposes.

When you install Microsoft Dynamics GP on a computer with an existing instance of Microsoft Dynamics GP, you'll enter a name for the new instance during the installation process. Each instance will be displayed in the Add or Remove Programs control panel. For example, if you entered TEST as an instance name, Microsoft Dynamics GP (TEST) will be displayed in the Add or Remove Programs control panel. The instance also will appear in the program group for Microsoft Dynamics and in the folder where Microsoft Dynamics is installed. The default folder location is C:\Program Files\Microsoft Dynamics\GP\$TEST. The first instance of Microsoft Dynamics GP on a computer is considered the default instance. The default instance of Microsoft Dynamics GP isn't assigned an instance name.

Index

A

- account framework
 - basic 26
 - custom 26
 - described 25
 - planning 26
 - sorting options 45
 - storage size 27
 - synchronizing a client 82
- accounts, default chart of accounts 63
- Acctfram.txt file 45
- additional components
 - described 60, 61
 - installing 61
- additional computers, installing on 79
- additional tasks, Microsoft Dynamics GP Utilities for the first computer 50
- alternate reports, granting access 70
- alternate windows, granting access 70

C

- changes since last release, information about 4
- chart of accounts
 - default 63
 - modifying default 63
- checklist, installation 7
- client installations
 - adding components 61
 - creating an installation package for 76
 - installing subsequent clients 79
 - Microsoft Dynamics GP Utilities 82
 - multiple instances 83
- collations, selecting 17
- companies, creating 53, 63
- CustomerSource, using to troubleshoot 8

D

- data sources (ODBC), setting up using SQL Native Client 23
- default chart of accounts 63
- Delete PJournal job, enabling 24
- documentation, symbols and conventions 3
- domains, described 15
- Duinstall.log, creation 22
- DYNOSA user, entering a password 46

E

- email, requirements 12

F

- Fabrikam, Inc., required account framework 26

H

- help, displaying 3
- Help menu, described 3
- hostnames, name resolution 15

I

- icons, used in manual 3
- installation
 - adding additional components 61
 - adding Microsoft Dynamics GP features 58
 - additional tasks for the first computer 50
 - checklist for Microsoft SQL Server 7
 - checklist for Microsoft SQL Server Express Edition 7
 - creating an installation package 76
 - first computer 31
 - Microsoft Dynamics GP Utilities 35
 - multiple instances 83
 - overview for clients 79
 - overview on the server 31
 - prerequisites 11
 - removing Microsoft Dynamics GP features 58
 - subsequent clients 79
 - using custom settings 42
 - using default settings 36
- installation packages
 - creating for clients 76
 - defined 75
 - overview 75
- instances, Microsoft Dynamics GP 83
- IP addresses, configuring 15

L

- lesson users, creating 50
- logging in to Microsoft Dynamics GP 69
- lookup window, displaying 4

M

- maximum request length, adding to Report Server web.config file 13
- Microsoft Dynamics CRM, initialize data 71
- Microsoft Dynamics GP CRM, requirements 14
- Microsoft Dynamics GP features
 - adding 58
 - described 57
 - removing 58
- Microsoft Dynamics GP Utilities
 - additional tasks for the first computer 50
 - advanced installation 42
 - basic installation 36
 - client installation 82
 - custom settings for advanced installation 36
 - default settings for basic installation 36
 - first computer installation 35
 - setting up Microsoft Dynamics GP with custom settings 42
 - setting up Microsoft Dynamics GP with default settings 36

- Microsoft Dynamics GP Utilities (*continued*)

- starting with user privileges 33
- Microsoft SQL Server
 - installing SQL Server 2012 18-21
 - Network Attached Storage 17
 - network protocols 15
 - selecting a collation 17
 - sorting options 18
 - SQL Server Agent 24
 - Storage Area Network 17
 - troubleshooting 9
- Microsoft SQL Server Express Edition
 - Network Attached Storage 17
 - Storage Area Network 17

N

- name resolution, TCP/IP 15
- network, domains 15
- network protocols, optimizing 15
- new features, information about 4

O

- ODBC, setting up a SQL Native Client data source 23

P

- ping, testing TCP/IP connectivity 16
- prerequisites
 - for installation 11
 - Word templates 11
- product support, before you call 9

R

- Readme file, reviewing 8
- registering Microsoft Dynamics GP, after installation 70
- remote access, system requirements 14
- Report Server, modify web.config file 13
- required fields, described 4
- requirements
 - Microsoft Dynamics GP CRM 14
 - SQL Server Reporting Services 13
 - system requirements 14
- resources, documentation 3

S

- sample company data, adding 50
- sample users, creating 50
- security
 - alternate reports 70
 - alternate windows 70
 - SQL Server Reporting Services reports 71
- segments
 - sorting options 45
 - storage size 27
- server installation
 - installing Microsoft Dynamics GP 31
 - ODBC setup using SQL Native Client 23

- sorting options
 - described 18
 - for account segments 45
- SQL Native Client, setting up an ODBC data source 23
- SQL Server, *see* Microsoft SQL Server
- SQL Server login, Web Client 55
- SQL Server Reporting Services reports, granting access 71
- storage sizes, account framework 27
- support, before you call 9
- symbols, used in manual 3

T

- TCP/IP
 - configuring 15
 - name resolution 15
 - testing connectivity 16
- technical support, before you call 9
- troubleshooting
 - additional resources 8
 - before you call support 9

W

- Web Client
 - SQL Server Login, 55
- web.config file, modifying 13
- what's new, accessing 4
- Word templates, prerequisites 11